

MODEL 28 and 39 GEM
GLASS FRONT MERCHANDISER
ILLUSTRATED PARTS MANUAL

L0125, REV. C

AUTOMATED MERCHANDISING SYSTEMS INC
255 WEST BURR BLVD.
KEARNEYSVILLE, WV 25430
304-725-6921 - Fax 304-725-6983

info@amsvendors.com
www.amsvendors.com

INTERNATIONAL A.M.S. S DE RL DE CV
KM. 9 CARR. AL CASTILLO NO. 8200
MPIO. DE EL SALTO, JAL. MEXICO 45680
5233-3-6-88-07-17 - Fax 5233-3-6-88-13-14

www.amsint.com.mx
servicio@amsint.com.mx

AMS Glass Front Merchandiser
Model 28 and 39 GEM
Illustrated Parts Manual

Table of Contents

<u>SECTION</u>	<u>PAGE</u>
INTRODUCTION	
Table of Contents	3
General Introduction	5
Manual Organization	5
Merchandiser Identification	6
Patent Disclosure	7
Publication Notice	7
CABINET DOOR	8
HOPPER	12
CABINET	16
Base Plate	18
CONTROL BAY DOOR	20
RIGHT RAIL MOUNT	24
LEFT RAIL MOUNT/ LIGHTING	28
TRAYS AND PARTS	30
ELECTRICAL HARNESSSES	42
HELIXES	54

GENERAL INTRODUCTION

The purpose of this manual is to give our customers a way of identifying major service parts for repair and replacement. The illustrations and parts list in this manual are for identification only. Some optional parts are also shown.

Illustrations of these major parts are keyed with our part numbers. The illustrations help identify the general design, position and orientation of these parts. The note section may also give important information.

Please refer to the section on merchandiser identification on the following pages. Without the model style and serial number it may be difficult to identify the required part.

Parts should be ordered from your distributor.

It is our intent to assist our customers with up-to-date documentation. However, this manual may not show all parts, variations or changes. Some parts may be shown out of scale. This manual is itself subject to change without notice. If any errors are found, please notify AMS so the correction can be included in later revisions. Engineering data and third party information are generally not included. The graphical data, group assembly data, parts, part assembly, parts breakout information and tabular data conveyed by this manual is proprietary and belongs to AMS, and holders without prior consent of or without knowledge of and by AMS must surrender this data immediately.

All measurements are in inches except where specified as Metric.

MANUAL ORGANIZATION

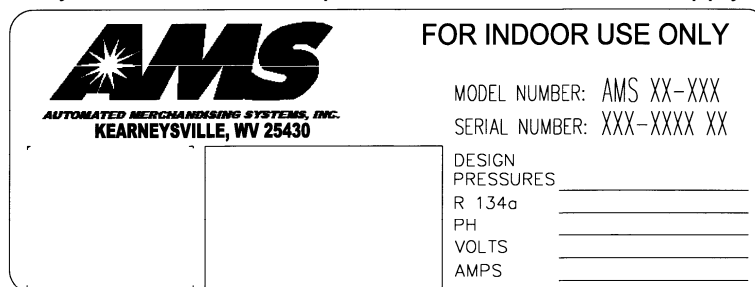
This manual is divided into general sections. Each section is further divided into the various subsections or subassemblies. These lead off with one or more illustrations showing the parts and each part is identified with a number. Note that some part numbers are for assemblies fabricated as a unit at AMS and are replaceable only as a unit. Also, other part numbers identify optional parts which may or may not have been contracted for and factory installed by AMS.

The part number in the illustration is listed with the description or title for that part. In some instances there may be multiple parts to choose from. The correct service or repair part for the style of merchandiser must be selected. There is a note section where additional information may be found.

This manual contains additional and new information for a vendor as currently manufactured. Older revisions of this manual should be kept with older vendors.

MERCHANDISER IDENTIFICATION

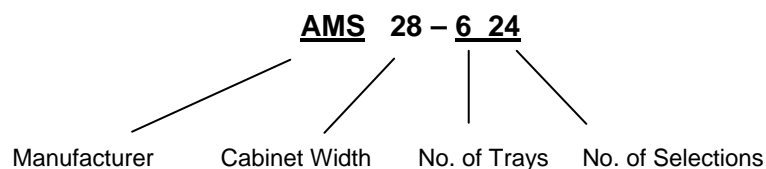
When requesting service, replacement parts or technical assistance, please use the **Model Number** and the **Serial Number with Date Code**, found on the Serial Plate (Refer to Figure 1) affixed to the merchandiser. The plate is usually located inside the window. The information contained on this plate is necessary to determine what parts, kits, or maintenance apply to your vendor.



72-002 Serial Plate

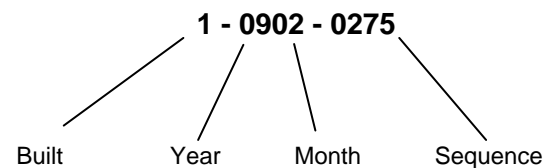
Figure 1. Example of Typical Serial Plate

Example of Model Number Breakdown



Example: **AMS28-6-24** means this vendor is an Automated Merchandising Systems merchandiser, **28"** wide, with six (**6**) trays making available twenty four (**24**) positions for different products.

Example of Serial Number and Date Code Breakdown



Example: **1-0902-0275** is translated as U.S. built (**1**), manufactured in **2009**, month of **February**, and was the **275th** manufactured that year.

Note: Manufactured in Mexico, Built = (2)

PATENT DISCLOSURE

This merchandiser and/or certain of its components are covered by one or more of the following U.S. and international patents;

U.S. PATENTS: 6,041,962; 6,145,699; 6,202,888; 6,384,402; 6,520,373; 6,708,079; 6,794,634; 7,191,915; 7,246,719; 7,343,220 B2; 7,446,302; 7,742,837.

CANADIAN PATENT 2,329,314.

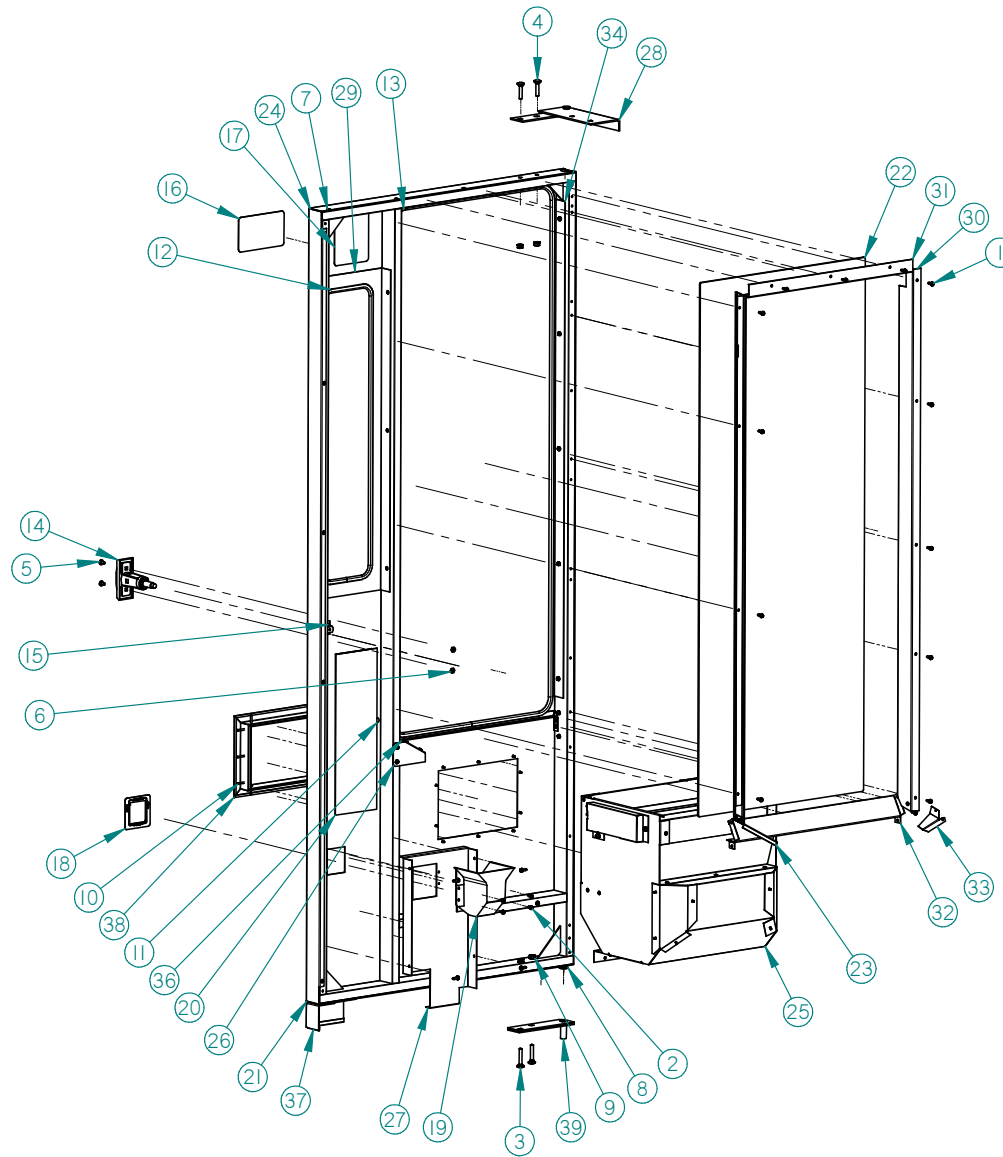
MEXICO PATENT 230714.

PUBLICATION NOTICE

L0125, Revision C, ECN 2437, 7/19/10

It is our intent to assist our customers with up-to-date documentation: however, this manual may not contain all updates and is subject to revision without notice. Please contact our Service Department with your requests or comments.

CABINET DOOR ILLUSTRATION



CABINET DOOR PARTS LIST

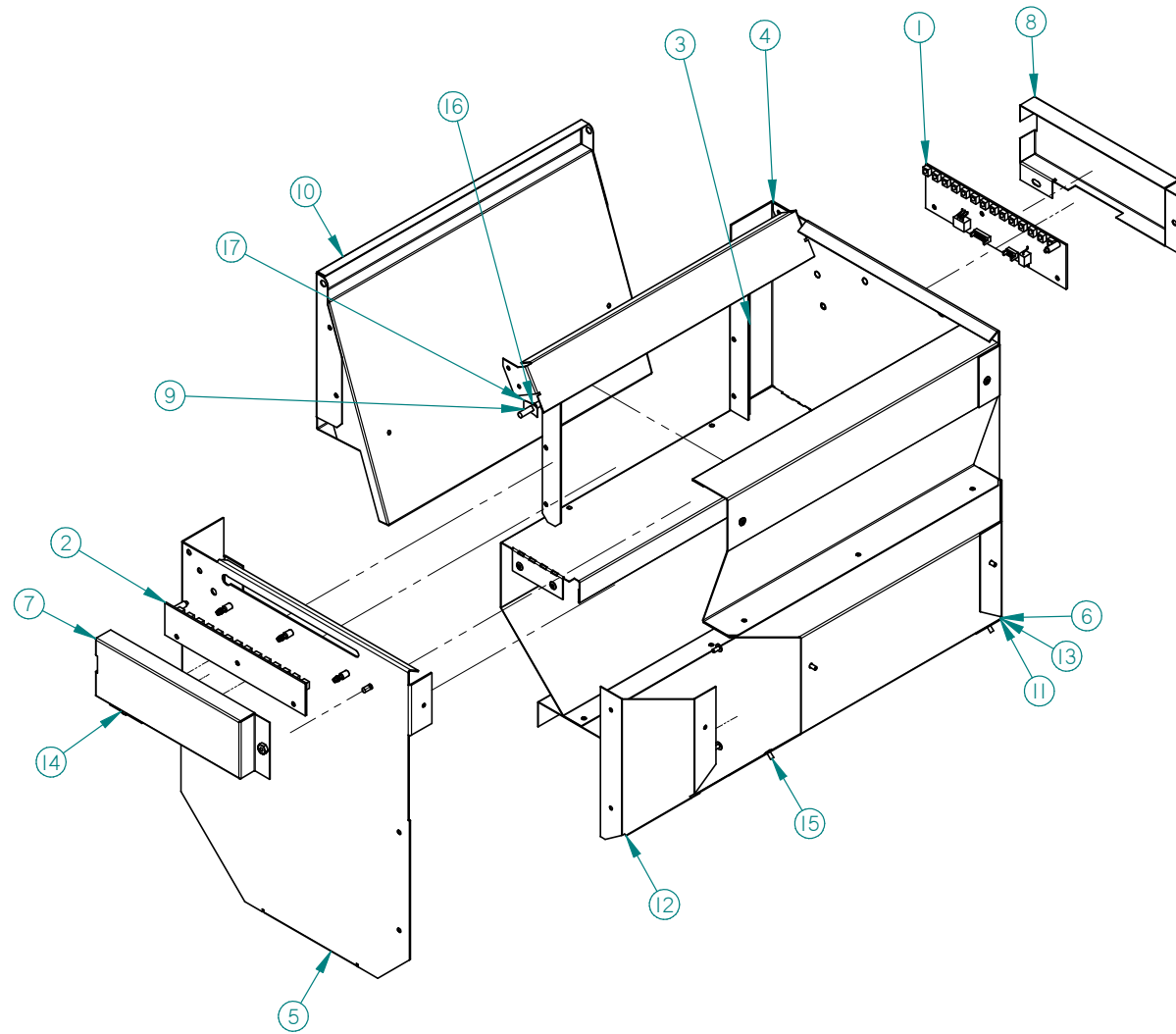
ITEM	PART NO.	PART DESCRIPTION	NOTES
1	3000	SCREW, SHEET METAL TEK – 8-18	
2	3001-03	SCREW, SHEET METAL, TYPE B, #8-18	
3	3004-12	CARRIAGE BOLT, ¼ - 20 X 1 ½ LG	
4	3004-10	CARRIAGE BOLT, ¼ - 20 X 1 ¼ LG	
5	3005-04	CARRIAGE BOLT, #10-24	
6	3006-10	#10-24 HEX NUT	
7	3009-02	RIVET, STEEL, 1/8, BLACK	
8	3023-15	WASHER, FLAT NYLON (1/2")	
9	3153-11	NUT, HEX WITH LOCK WASHER	
10	3156-10	RIVET, ALUMINUM, 1/8, NATURAL	
11	3670-03	HOOK AND LOOP CLOSERS	
12	3684	EDGE TRIM, SELF-LOCKING	
13	3684	ASSEMBLY, DOOR FRAME	
14	3724	ASSEMBLY, T-HANDLE, SHORT THREAD	
15	20131	LOCK, T-HANDLE CYLINDER	
16	21318	DECAL, WARNING, NO TIP OR ROCKING	
17	21325	DECAL, WARNING, TRAY EXTENSION	
18	23372	TRIM, PLASTIC COIN CUP	
19	23373	ASSEMBLY, PLASTIC COIN CUP	
20	23802	DECAL, COMBINED WIRING DIAGRAM	
21	23860	DOOR SKIN	MODEL 28 SLIM
	24165		MODEL 39 GEM
22	23865	GLASS, SINGLE PANE	MODEL 28 SLIM
	24164		MODEL 39 GEM
23	23867	ASSEMBLY, VERTICAL KICKER	

24	23871	ASSEMBLY, DOOR FRAME	MODEL 28 SLIM
	24163		MODEL 39 GEM
25	23873	ASSEMBLY, HOPPER	MODEL 28 SLIM
	24170		MODEL 39 GEM
26	23875	BRACE, DOOR KICKER	
27	23881	PANEL, COIN CUP MOUNTING	
28	23946	ASSEMBLY, TOP HINGE	
29	23963	STIFFENER, ESCUTCHEON	
30	23979	RETAINER, GLASS, RIGHT SIDE	
31	23980	RETAINER, GLASS, TOP	MODEL 28 SLIM
	24169		MODEL 39 GEM
32	23981	RETAINER, GLASS, BOTTOM	MODEL 28 SLIM
	24168		MODEL 39 GEM
33	23982	KICKER, RIGHT SIDE	
34	24000	BRACKET, VERTICAL WINDOW STIFFENER	
35	24001	BRACKET, TOP WINDOW STIFFENER	MODEL 28 SLIM
	24166		MODEL 39 GEM
36	24004	BRACKET, BOTTOM WINDOW STIFFENER	MODEL 28 SLIM
	24167		MODEL 39 GEM
37	24005	FALSE LEG	
38	24063	HOPPER TRIM	MODEL 28 SLIM
	21624		MODEL 39 GEM
39	24047	DOOR HINGE, BOTTOM	
40	23718	ROLLER ASSEMBLY	NOT SHOWN

General Note: Door skin decal (if equipped) is not shown in parts list.

THIS PAGE INTENTIONALLY LEFT BLANK

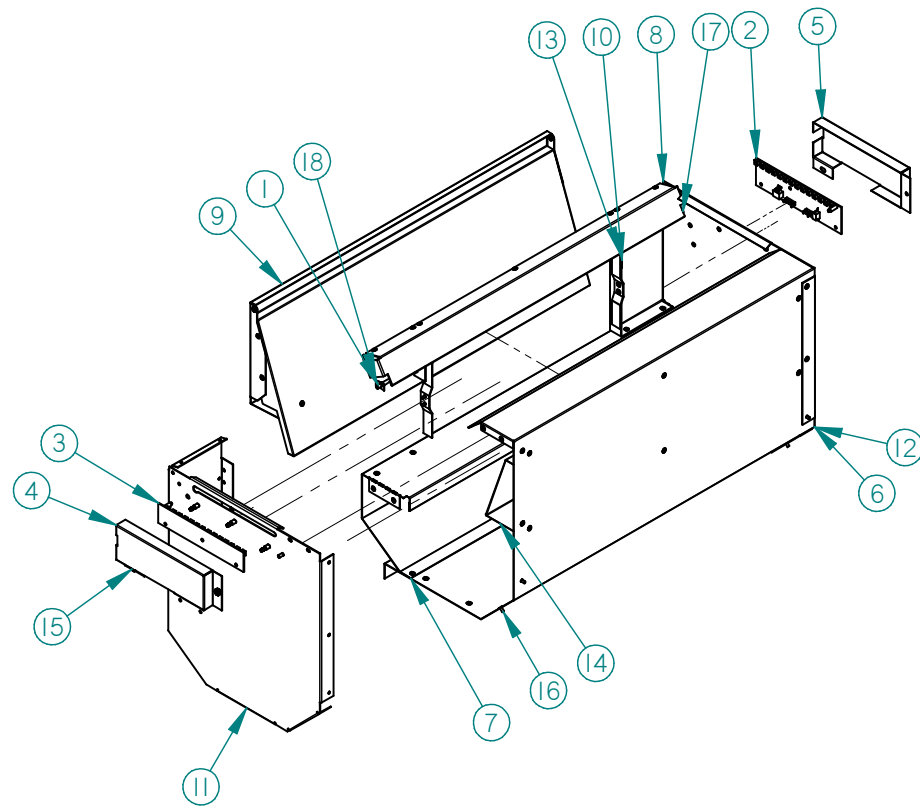
MODEL 28 HOPPER PARTS ILLUSTRATION



MODEL 28 HOPPER PARTS LIST

ITEM	PART NO.	PART DESCRIPTION	NOTES
1	24342	SENSOR BOARD, PRIMARY	
2	24343	SENSOR BOARD, SECONDARY	
3	23486	HOPPER FRAME	
4	23874	DEFLECTOR, HOPPER	
5	23877	ASSEMBLY, HOPPER RIGHT SIDE	
6	23877-01	ASSEMBLY, HOPPER LEFT SIDE	
7	23878	BRACKET, SENSOR COVER, RIGHT	
8	23878-01	BRACKET, SENSOR COVER, LEFT	
9	23913	VEND DOOR SHAFT	
10	23932	ASSEMBLY, HOPPER DOOR	
11	23933	ASSEMBLY, HOPPER BODY	
12	23956	HOPPER, BACK SIDE, LEFT	
13	23956-01	HOPPER, BACK SIDE, RIGHT	
14	3006-08	#8-32 HEX NUT	
15	3009-02	RIVET, STEEL, 1/8" BLACK	
16	3015	BEARING, NYLINER	
17	3113	TINNERMAN FASTENER, 3/16	

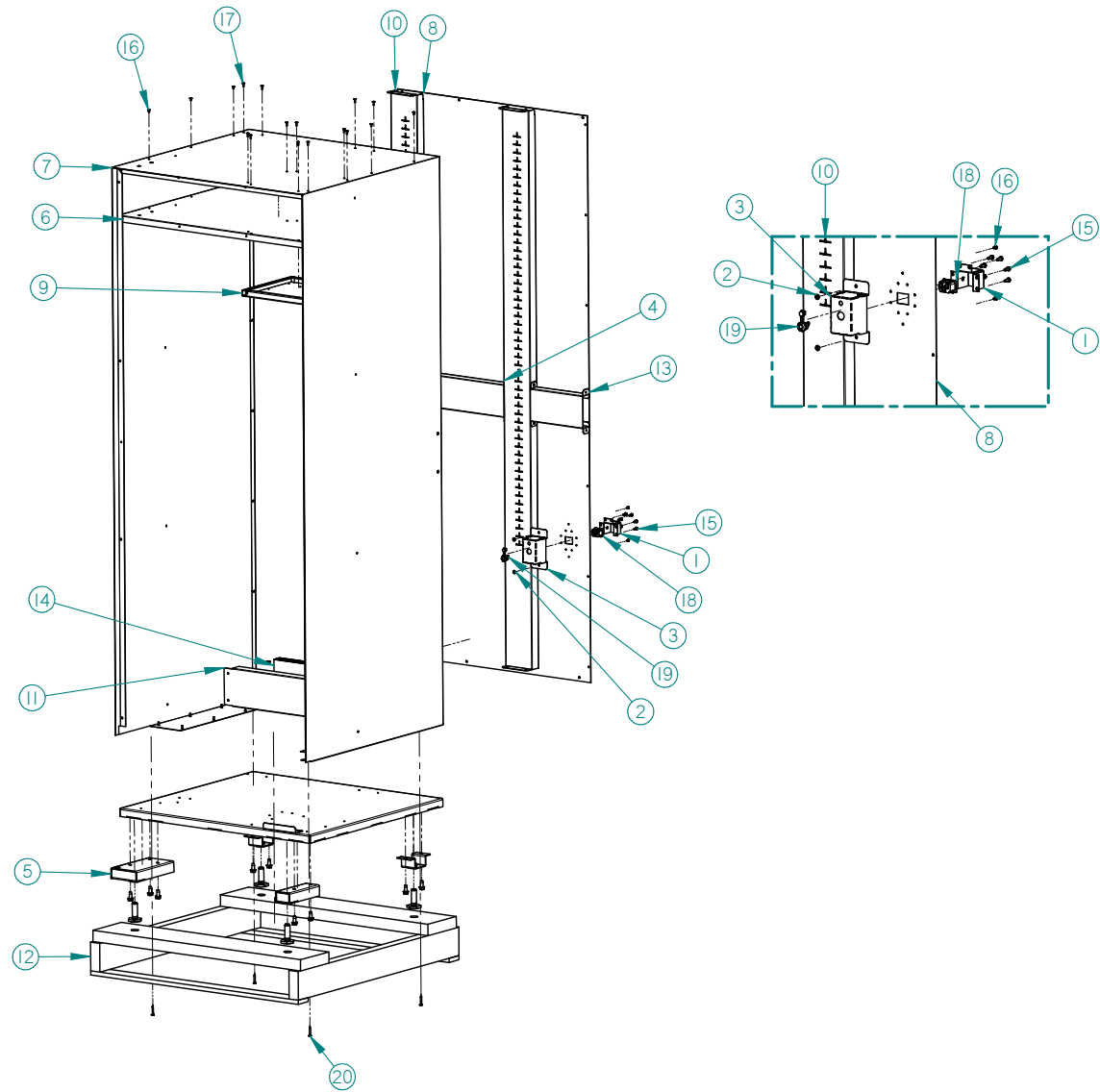
MODEL 39 HOPPER PARTS ILLUSTRATION



MODEL 39 HOPPER PARTS LIST

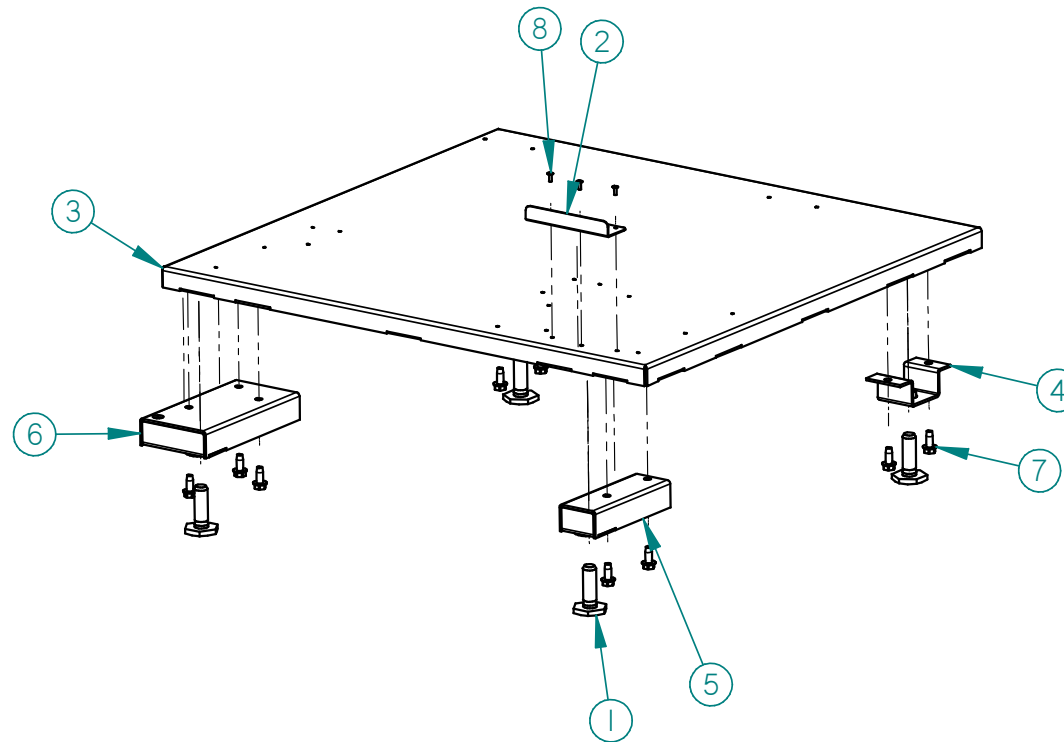
ITEM	PART NO.	PART DESCRIPTION	NOTES
1	20108	VEND DOOR SHAFT	
2	24342	SENSOR BOARD, PRIMARY	
3	24343	SENSOR BOARD, SECONDARY	
4	23878	BRACKET, SENSOR COVER, RIGHT	
5	23878-01	BRACKET, SENSOR COVER, LEFT	
6	24173	PANEL, HOPPER, BOTTOM	
7	24174	PANEL, HOPPER, FRONT	
8	24175	DEFLECTOR, HOPPER	
9	24176	ASSEMBLY, HOPPER DOOR	
10	24181	FRAME, HOPPER	
11	24182	ASSEMBLY, HOPPER RIGHT SIDE	
12	24183	ASSEMBLY, HOPPER LEFT SIDE	
13	24188	RETAINER, HOPPER TRIM	
14	24226	INSERT, HOPPER	
15	3006-08	#8-32 HEX NUT	
16	3009-02	RIVET, STEEL, 1/8" BLACK	
17	3015	BEARING, NYLINER	
18	3113	TINNERMAN FASTENER, 3/16	

CABINET PARTS ILLUSTRATION



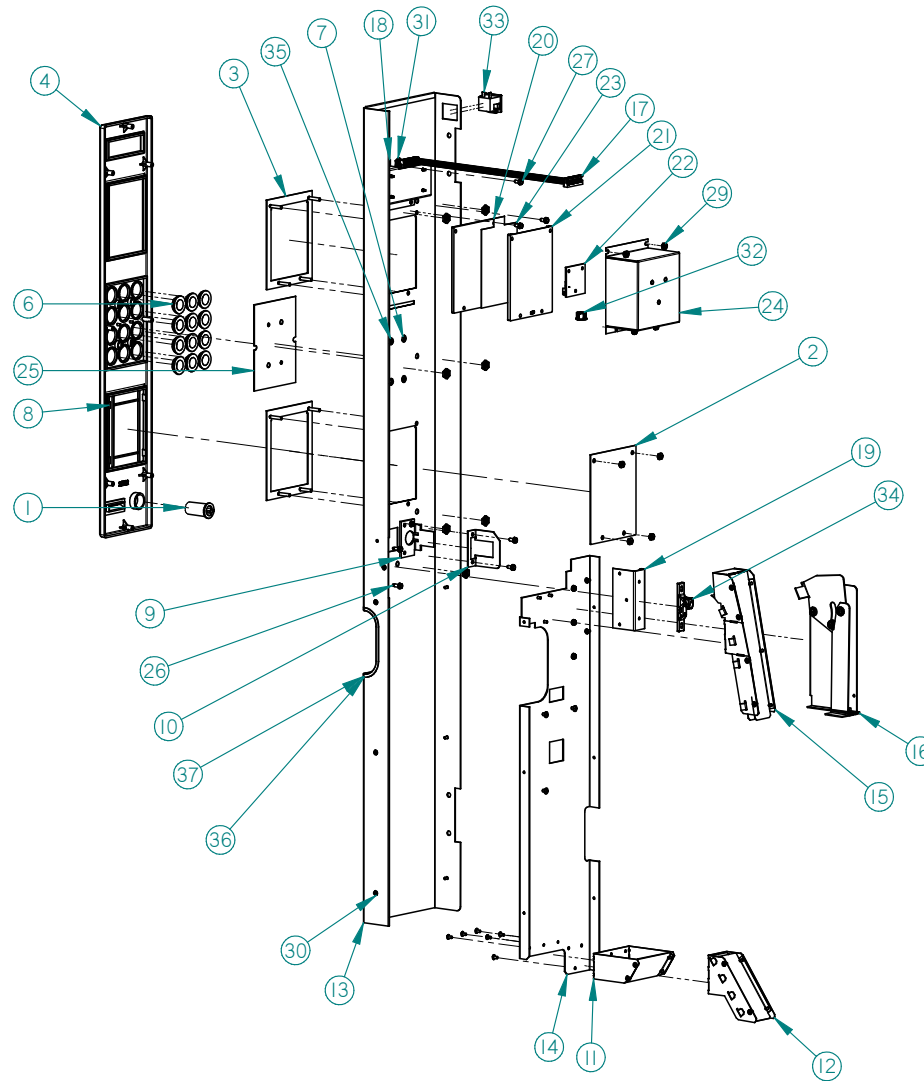
CABINET PARTS LIST			
ITEM	PART NO.	PART DESCRIPTION	NOTES
1	20608	COVER, POWER CORD	
2	3017-06	WASHER, FLAT STEEL, SAE STD.	
3	20321	COVER, IEC INLET	
4	23456	RAIL MOUNT BACK, LARGE SUPPORT	MODEL 28 SLIM
	24148		MODEL 39 GEM
5	23853	ASSEMBLY, BASE	MODEL 28 SLIM
	24136		MODEL 39 GEM
6	23920	DOUBLER, TOP	MODEL 28 SLIM
	24157		MODEL 39 GEM
7	23926	WRAPPER, CABINET	MODEL 28 SLIM
	24205		MODEL 39 GEM
8	23928	WRAPPER BACK	MODEL 28 SLIM
	24147		MODEL 39 GEM
9	23944	SPACER, RAIL MOUNT	
10	23971	RAIL MOUNT, BACK	
11	24021	BRACKET BALLAST RESTRAINT	CANADIAN MODEL 28 ONLY
12	24037	PALLET, SHIPPING	MODEL 28 SLIM
	24158	SHIPPING BOARDS	MODEL 39 GEM
13	24045	SUPPORT, SMALL RAIL MOUNT, BACK	
14	24053	ASSEMBLY, STABILITY WEIGHT WELDMENT	CANADIAN MODEL 28 ONLY
15	3000	SCREW, SHEET METAL TEK – 8-18	
16	3009-02	RIVET, STEEL, 1/8", BLACK	
17	3009-04	RIVET, POP, STEEL, 1/8, BLACK	
18	3057	INLET, PANEL MOUNT, IEC	
19	3080	STRAIN RELIEF, BUTTON LOCK	
20	3241-10	SCREW, #6 DRYWALL	
21	3270	DECAL – MADE IN THE USA	NOT SHOWN
22	24233	ASSEMBLY, INSERT TOP	MODEL 39 ONLY (NOT SHOWN)
23	24237	PANEL, BOTTOM INSERT	MODEL 39 ONLY (NOT SHOWN)

BASE PLATE PARTS ILLUSTRATION



BASE PLATE PARTS LIST			
ITEM	PART NO.	PART DESCRIPTION	NOTES
1	20121	LEG, LEVELING	
2	23701	BASE, COIN BOX, RESTRICTION	
3	23855	ASSEMBLY, BASE WELDMENT	MODEL 28 SLIM
	24137		MODEL 39 GEM (NOT SHOWN)
4	23857	ASSEMBLY, LEG WELDMENT	
5	24009	ASSEMBLY, LEG, EXTENDED FRONT	
6	24010	ASSEMBLY, DOOR HINGE W/FOOT	
7	3007-06	SCREW, 5/16 – 18, TYPE F	
8	3009-04	RIVET, POP, STEEL 1/8	

DOOR, CONTROL BAY ILLUSTRATION



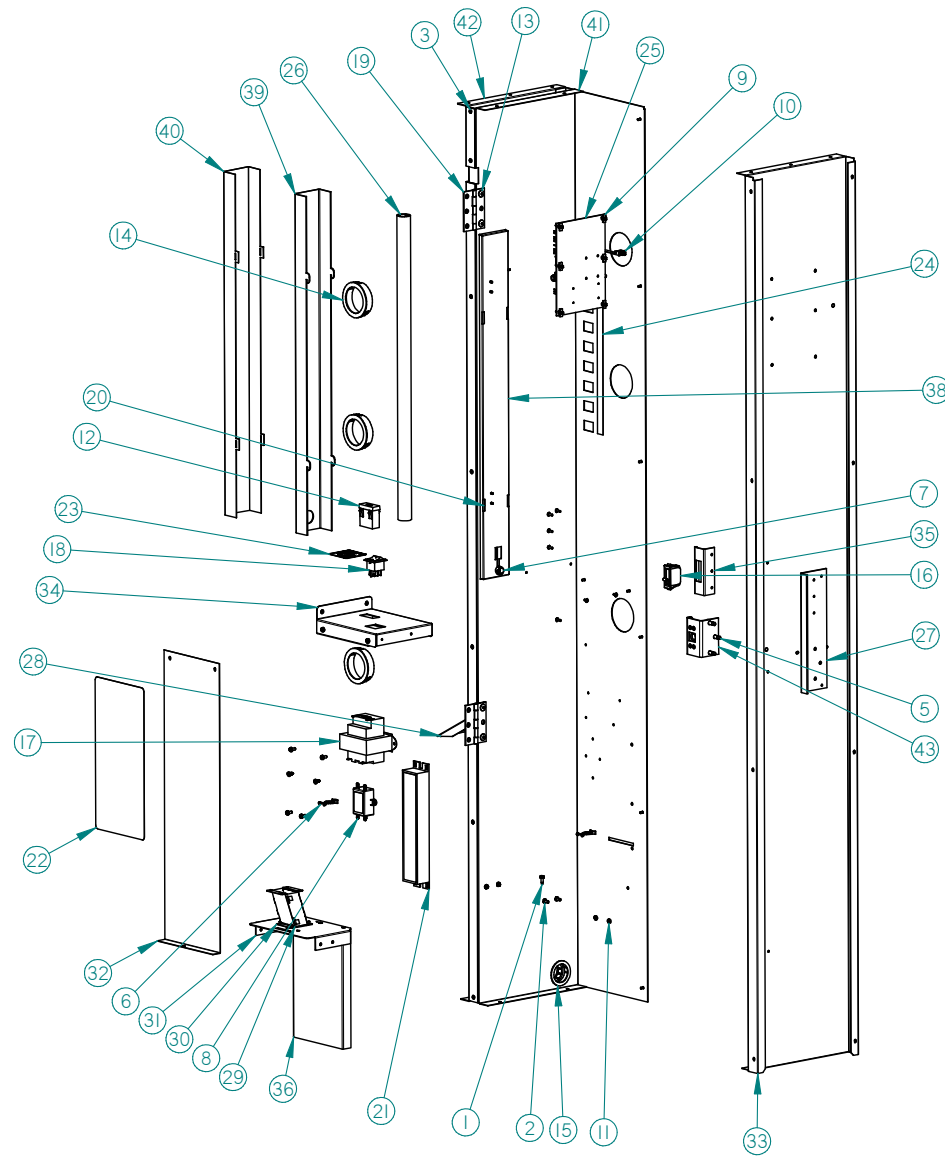
DOOR, COIN BAY PARTS LIST

ITEM	PART NO.	PART DESCRIPTION	NOTE
1	20081	SCAVENGER BUTTON	
2	20181	DBV COVER PLATE	
3	20344	DBV MOUNTING BEZEL ASSEMBLY	
4	21762	PLASTIC ESCUTCHEON, V2	
5	22175	ESCUTCHEON LENS	NOT SHOWN
6	22177	PLASTIC BUTTON	
7	22180	MEMBRANE SWITCH MOUNTING PLATE	NOT SHOWN
8	22184	DBV COVER PANEL	
9	22335	BRACKET, PUSH BUTTON ALIGNMENT	
10	22367	SCAVENGER STOP BRACKET, VER. 2	
11	23526	ASSEMBLY, COIN CUP ADAPTOR CONE	
12	23707	ASSEMBLY, COIN CHUTE, M. PANEL	
13	23948	DOOR PANEL, CONTROL BAY	
14	23950	PANEL, CHANGER MOUNTING	
15	23951	ASSEMBLY, COIN CHUTE	
16	23953	ASSEMBLY, SCAVENGER SYSTEM	
17	24015	DISPLAY HARNESS	
18	24016	DISPLAY ASSEMBLY	
19	24030	BRACKET, LATCH MOUNTING	
20	24322	PLACE HOLDER INSERT	
21	24323	PLACE HOLDER DIFFUSER	
22	24329	LED BOARD	
23	24330	POS CARD	
24	24339	LIGHT BOX ASSEMBLY	
25	24424	MEMBRANE KEYPAD	
26	3000	SCREW, SHEET METAL TEK – 8-18	
27	3001-03	SCREW, SHEET METAL, TYPE B, #8-18	
28	3002-04	SCREW, MACHINE, TYPE F, #8-32	
29	3006-08	#8-32 HEX NUT	
30	3009-02	RIVET, STEEL, 1/8", BLACK	
31	3011	SELF THREADING NUT, 1/4" STUD	

32	3029-02	BUSHING	
33	3036	SWITCH, PANEL MOUNT ROCKER	
34	3226-01	KEEPER, SLAM ACTION LATCH	
35	3289-02	SCREW, #8 PAN HEAD	
36	3693	GROMMET EDGING, 4.87" LG	
37	3693	GROMMET EDGING, 6.5" LG	
38	20526	COIN BOX	NOT SHOWN

THIS PAGE INTENTIONALLY LEFT BLANK

RIGHT RAIL MOUNT PARTS ILLUSTRATION



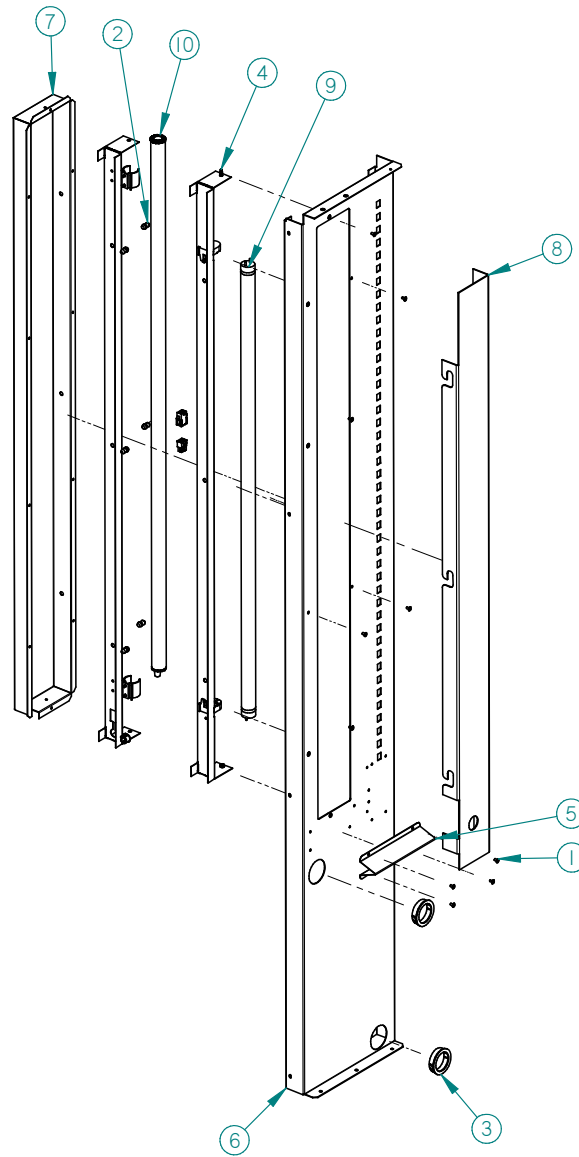
RIGHT RAIL MOUNT PARTS LIST

ITEM	PART NO.	PART DESCRIPTION	NOTES
1	3000	SCREW, SHEET METAL TEK – 8-18	
2	3001-03	SCREW, SHEET METAL, TYPE B, #8-18	
3	3009-02	RIVET, STEEL, 1/8" BLACK	
4	3009-04	RIVET, POP, STEEL 1/8	
5	3018-06	SCREW, SHEET METAL TEK 8-18	
6	3020	WIRE TIE, STANDOFF	
7	3029-02	BUSHING	
8	3030	RFI FILTER, 115V	CHECK UNIT VOLTAGE
	3191	RFI FILTER, 220V	
9	3037-01	PC BOARD SUPPORT	
10	3081	WIRE TIE, .25 PANEL MOUNT	
11	3084-03	SCREW, SEM, 8-32	
12	3133-30	ASSEMBLY, FUSE HOLDER AND FUSES	
13	3172-02	RIVET, ALUMINUM, ¼" NATURAL	
14	3205-24	GROMIT	
15	3205-34	GROMIT	
16	3226-02	CATCH, SLAM ACTION LATCH	
17	3257	TRANSFORMER, 115V	CHECK UNIT VOLTAGE
	3258	TRANSFORMER, 220V	
18	3284	SWITCH, ROCKER, ON/OFF	
19	3602	HINGE, 2" X 3"	
20	3689-10	CLIP, 1" DIA	
21	20730	BALLAST, 115V	CHECK UNIT VOLTAGE
	24025	BALLAST, 220V	
22	21324	DECAL, WARNING	

23	21509	DECAL, 24V FUSE	
24	22041	DECAL, TRAY POSITION	
25	23021	CONTROL BOARD, SENSIT III	
26	23522	LED LAMP 24"	OPTIONAL
27	23680	LATCH, REINFORCEMENT	
28	23887	KICKER, RAIL MOUNT RIGHT	
29	23898	COIN CHUTE	
30	23898-01	COIN CHUTE, LH	
31	23899	BULKHEAD, COIN BOX	
32	23908	CONTROL BAY, WIRE COVER	
33	23938	RAIL MOUNT, VERTICAL SUPPORT	
34	23940	SUPPORT, RAIL MOUNT	
35	23957	BRACKET, LOCK HOLDER	
36	23964	PLATE, COIN BOX RESTRICTOR	
37	24161	TRAY STOP, BUTTON STYLE, GEM	
38	24253	BOX, RIGHT RAIL	
39	24255	LAMP COVER	OPTIONAL
40	24267	LIGHT BOX COVER	OPTIONAL
41	24295	RAIL MOUNT INSERT	
42	24296	RAIL MOUNT PANEL	
43	24302	ASSEMBLY, LOCK NUT, GEM	
44	24430	BRACKET, COIN DOOR STOP	NOT SHOWN

THIS PAGE INTENTIONALLY LEFT BLANK

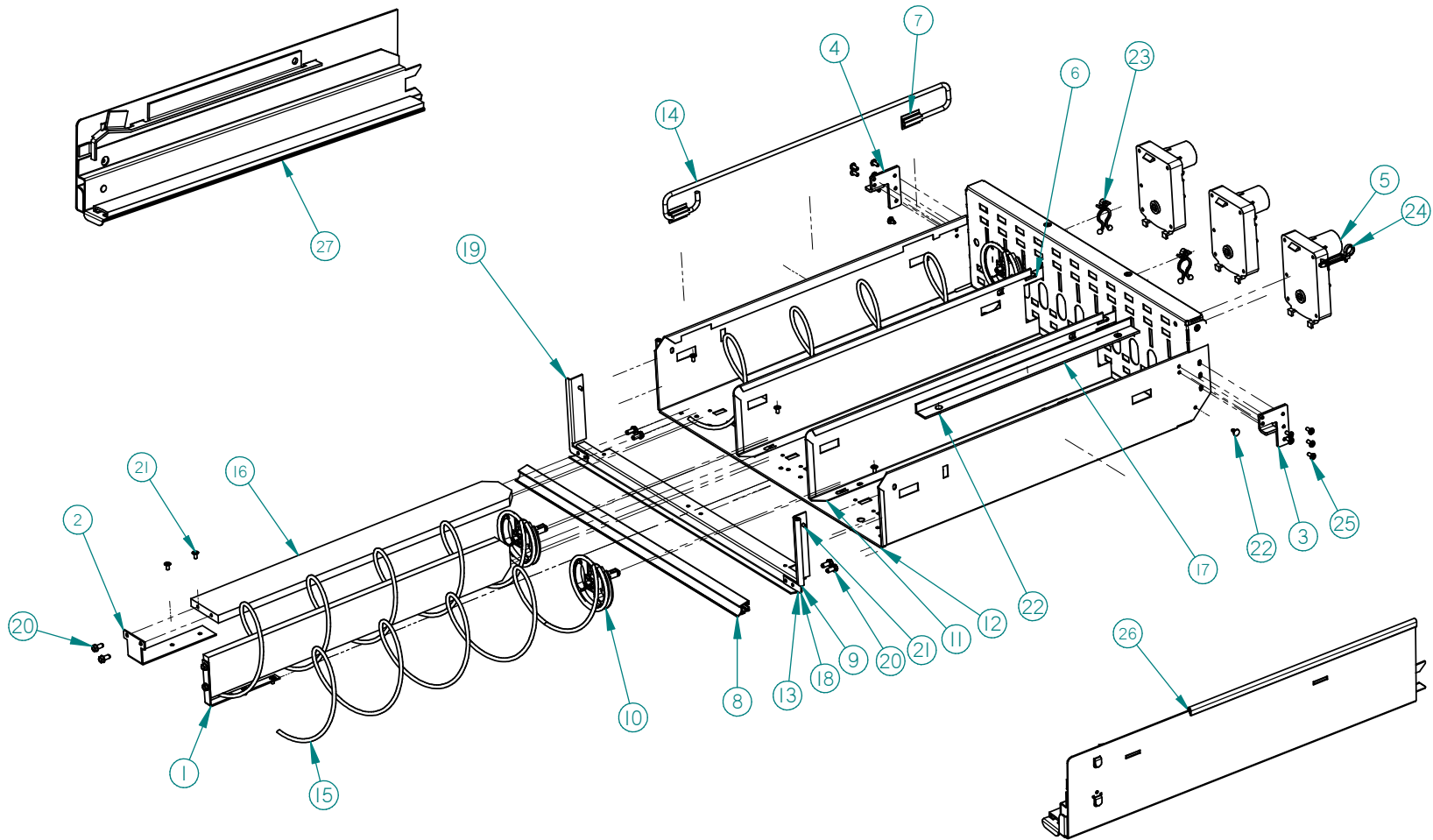
LEFT RAIL MOUNT ILLUSTRATION



LEFT RAIL MOUNT PARTS LIST

ITEM	PART NO.	PART DESCRIPTION	NOTE
1	3009-02	RIVET, STEEL, 1/8", BLACK	
2	3038	RIVET, NYLON	
3	3205-24	GROMIT	
4	3342-04	SCREW, SHEET METAL TEK – 8-18	
5	23446	PRODUCT KICKER, LEFT, SLIM	
6	23892	RAIL MOUNT, FORWARD, LEFT	
7	23893	BOX, 35" LAMP MOUNTING	
8	23894	COVER, 35" LAMP	
9	3202	FLUORESCENT LAMP, 25W	
10	23521	LED LAMP, 42"	OPTIONAL
11	23901	HARNESS, SINGLE LAMP, 115V	(NOT SHOWN) CHECK UNIT VOLTAGE
	24023	HARNESS, SINGLE LANP, 220V	

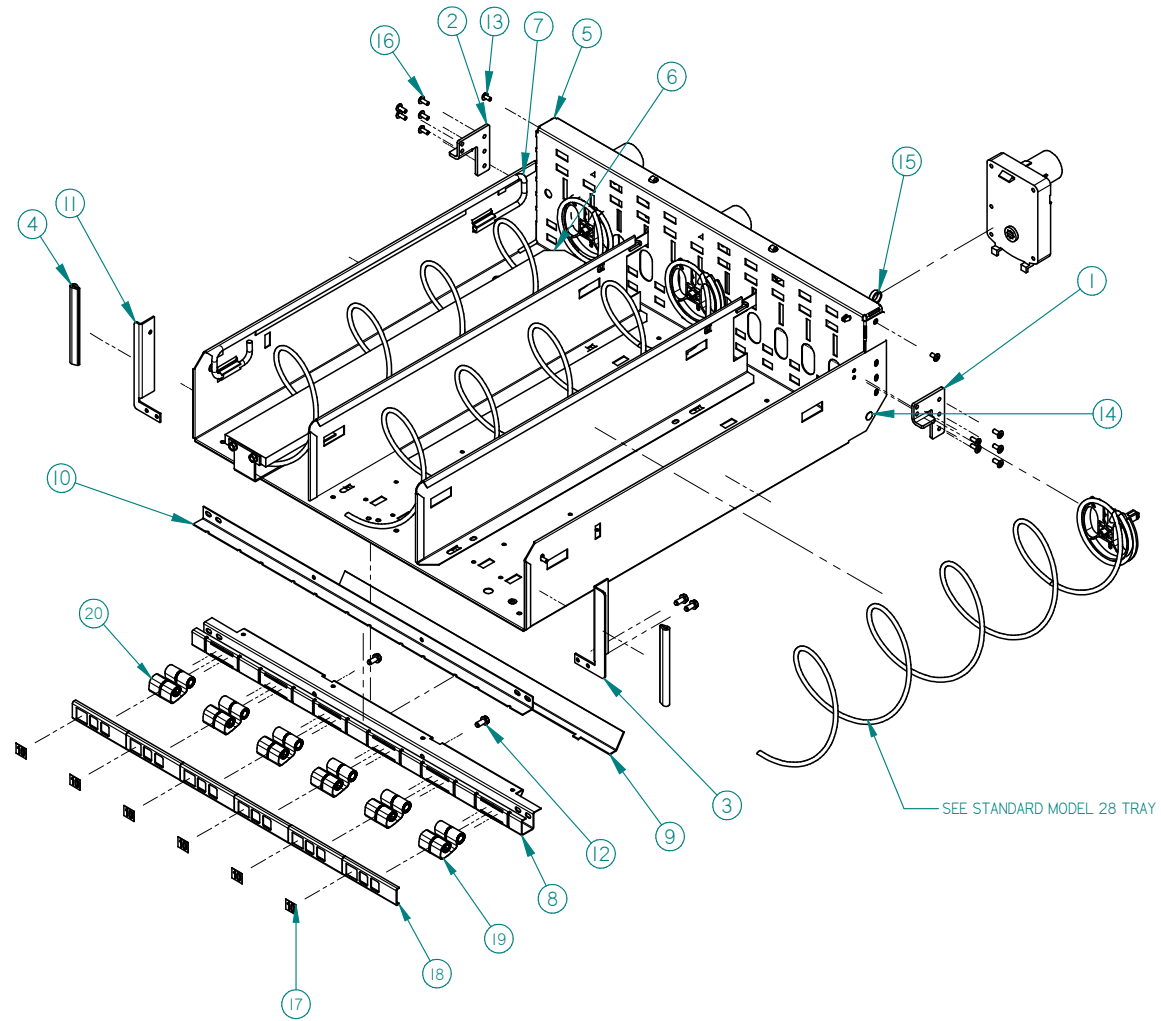
MODEL 28 STANDARD TRAY ILLUSTRATION



MODEL 28 STANDARD TRAY PARTS LIST

ITEM	PART NO.	PART DESCRIPTION	NOTE
1	20421	HELIX SPLITTER BRACKET	OPTIONAL ITEM
2	20527	BRACKET, CUP RAIL, SMALL HELIX	OPTIONAL ITEM
3	20073	TRAY STOP	
4	20073-01	TRAY STOP, LH	
5	23007	MOTOR W/HOME CIRCUIT, CCW	OPTIONAL ITEM
	23007-01	MOTOR W/HOME CIRCUIT, CW	OPTIONAL ITEM
6	20133	TRAY DIVIDER SPRING	
7	20220	EXTRUSION, CANDY PUSHER	OPTIONAL ITEM
8	20465-06	EXTRUSION, PRICE MARKER	
9	20796-01	EDGE TRIM, TRAY CORNER	
10	20966	HELIX ADAPTER	
11	23447	TRAY DIVIDER STANDARD	OPTIONAL ITEM
	24335	TRAY DIVIDER 4-7/8"	OPTIONAL ITEM
	24337	TRAY DIVIDER 8"	OPTIONAL ITEM
12	23448	TRAY BODY, REDUCED DEPTH	
13	23492	TRAY DOUBLER	
14	23502	BAR, CANDY PUSHER	
15	23549	HELIX, SMALL CCW, PAINTED	SEE HELIX DESCRIPTION SECTION FOR OPTIONS
16	23553	HELIX SPLITTER	OPTIONAL ITEM
17	23969	HELIX ALIGNMENT DEVICE	OPTIONAL ITEM
18	24050	TRAY CORNER, NARROW	
19	24050-01	TRAY CORNER, NARROW, LH	
20	3001-03	SCREW, SHEET METAL, TYPE B, #8-18	
21	3009-02	RIVET, STEEL, 1/8", BLACK	
22	3019	CANOE CLIP	
23	3020	WIRE TIE, STANDOFF	
24	3042-01	WIRE TIE, PANEL MOUNT	
25	3295-03	RIVET, STEEL, 1/8", PLATED	
26	23545	RIGHT TRAY RAIL	
27	23546	LEFT TRAY RAIL	
28	20613	LABEL SHEET, LOCATION	NOT SHOWN
29	20614	LABEL SHEET, PRICE	NOT SHOWN
30	20528	BRACKET, CUP RAIL LARGE HELIX	NOT SHOWN REF ITEM 2 FROM ILLUSTRATION

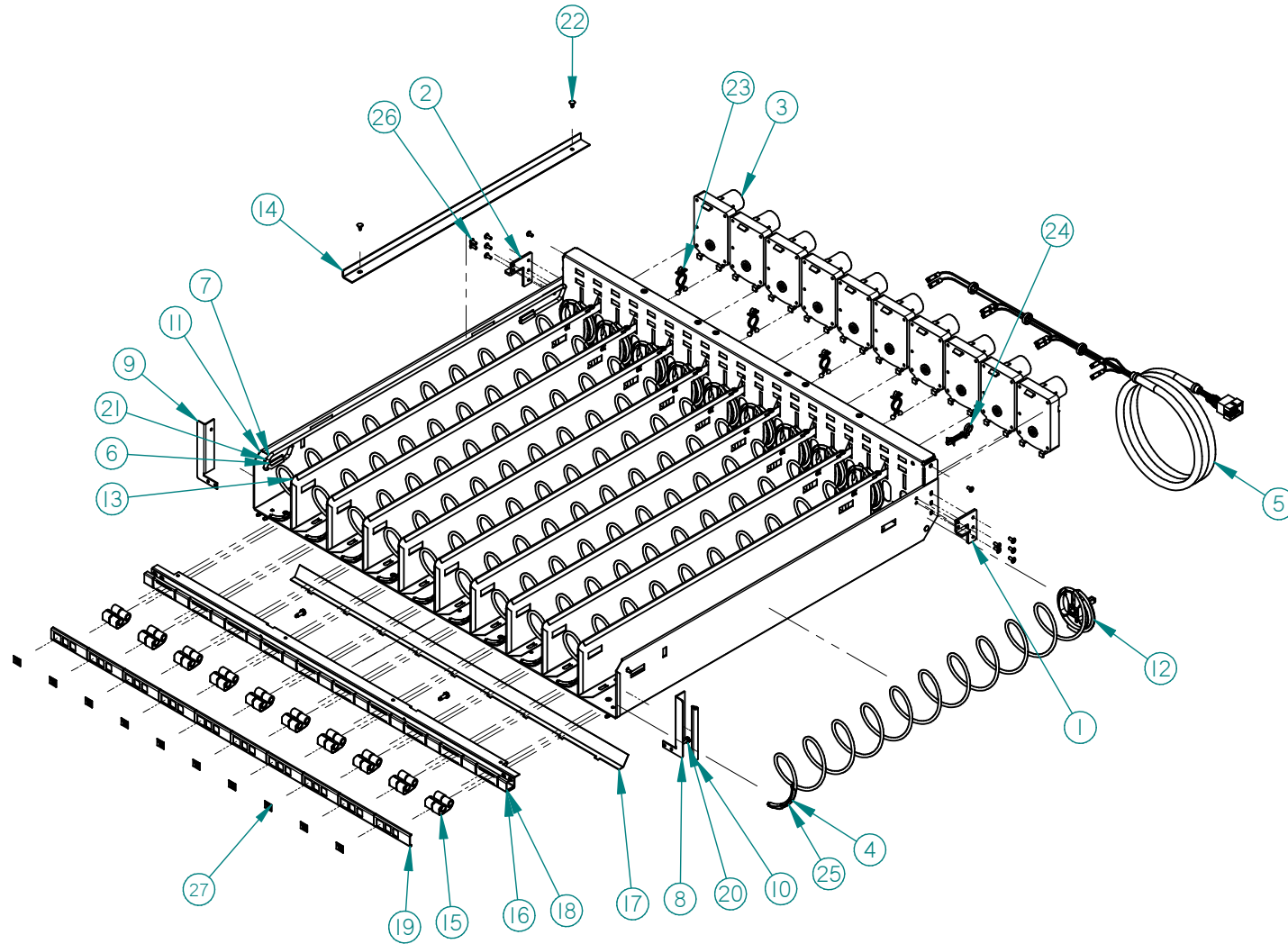
MODEL 28 SCROLLING PRICE TRAY ILLUSTRATION



MODEL 28 SCROLLING PRICE TRAY PARTS LIST			
ITEM	PART NO.	PART DESCRIPTION	NOTE
1	20073	TRAY STOP	
2	20073-01	TRAY STOP, LH	
3	20545	TRAY CORNER	
4	20796-01	EDGE TRIM, TRAY CORNER	
5	23448	TRAY BODY, REDUCED DEPTH	
6	23967	KIT, CUP RAIL	OPTIONAL ITEM
7	23968	KIT, CANDY PUSHER	OPTIONAL ITEM
8	24017	STIFFENER, TRAY, SCROLLING PRICES	
9	24018	COVER, TRAY STIFFENER	
10	24019	GUIDE, SCROLLING PRICES	
11	24050-01	TRAY CORNER, LH	24050-01
12	3001-03	SCREW	
13	3009-02	RIVET	
14	3019	CANOE CLIP	
15	3042-01	WIRE TIE	
16	3295-03	RIVET	
17	23292	LOCATION LABEL	
18	23791	COVER, 10 SELECT	QUANTITIES OPTIONAL
	23791-01	COVER, 10 SELECT BLANK	
19	23321	SCROLL, PRICE .00-.95	QUANTITIES OPTIONAL
20	23322	SCROLL, PRICE 1-20	

Note: Reference model 28 standard tray for additional parts.

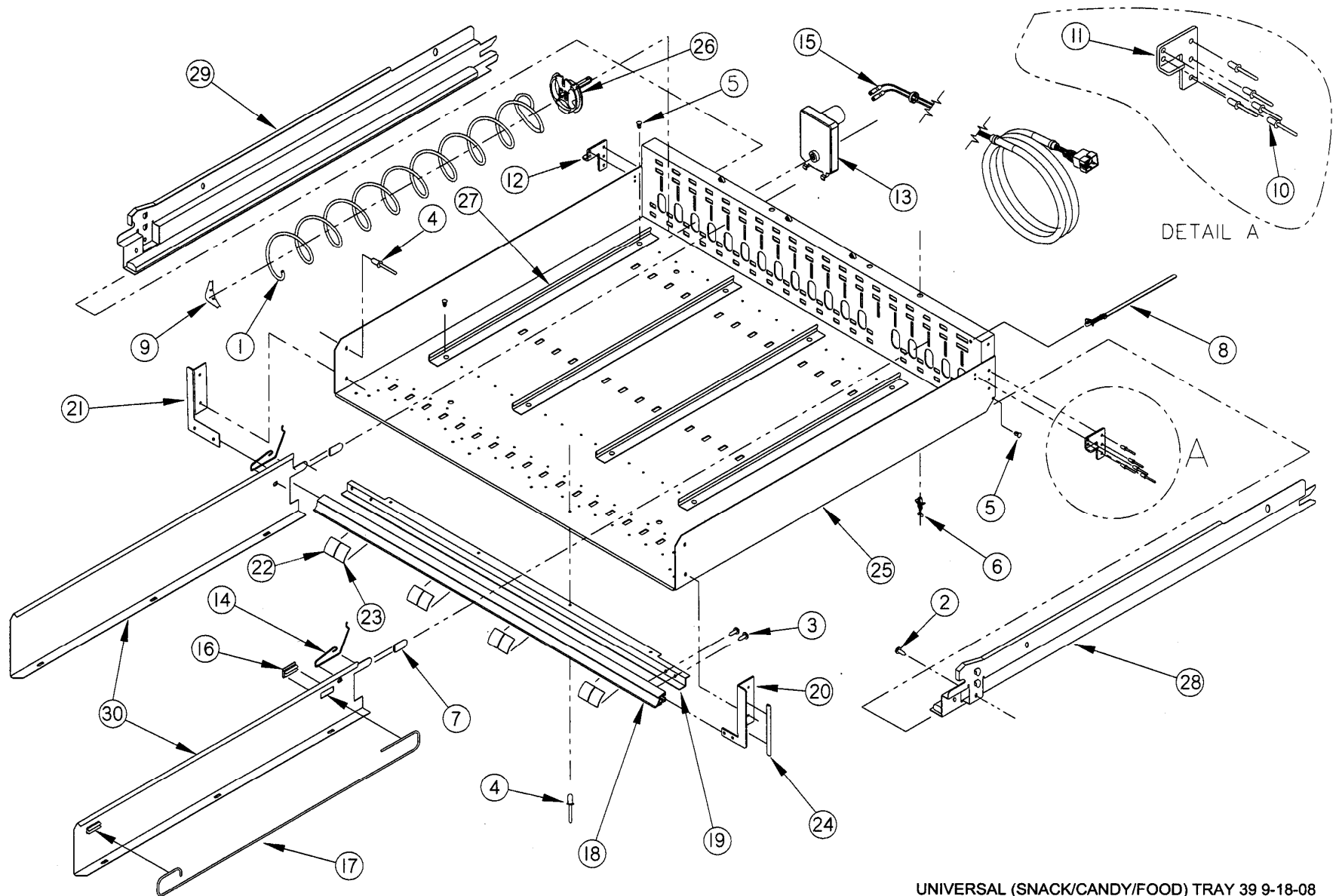
MODEL 39 SCROLLING PRICE TRAY ILLUSTRATION



MODEL 39 SCROLLING PRICE TRAY PARTS LIST

ITEM	PART NO.	PART DESCRIPTION	NOTE
1	20073	TRAY STOP	
2	20073-01	TRAY STOP LEFT	
3	23007	MOTOR, COUNTER CLOCKWISE	
	23007-01	MOTOR, CLOCKWISE	OPTIONAL
4	-----	HELIX	SEE HELIX TABLE
5	20147	HARNES, TRAY 10 COLUMN	
6	20220	EXTRUSION, CANDY PUSHER	OPTIONAL
7	20021	BAR, CANDY PUSHER	OPTIONAL
8	20545	TRAY CORNER, RH	
9	20545-01	TRAY CORNER, LH	
10	20796-01	EDGE TRIM, TRAY CORNER	
11	20955	TRAY BODY	
12	20966	HELIX ADAPTER	
13	21138	DIVIDER, STANDARD	OPTIONAL
	21139	DIVIDER, HIGH	OPTIONAL
	23664	DIVIDER, EXTRA HIGH	OPTIONAL
14	22192	HELIX ALIGNMENT DEVICE	OPTIONAL
15	23322	SCROLL, PRICE LABEL, 1-20	
	23321	SCROLL, PRICE LABEL, .00-.95	
16	23785	TRAY STIFFENER	
17	23786	TRAY STIFFENER COVER	
18	23787	GUIDE	
19	23791	10 SELECT COVER	OPTIONAL
	23791-01	10 SELECT COVER, NO WINDOWS	OPTIONAL
20	3000	SCREW	
21	3009-02	RIVET	
22	3019	CANOE CLIP	
23	3020	WIRE TIE STANDOFF	
24	3042-01	WIRE TIE, PANEL MOUNT	
25	3111	HELIX EJECTOR	
26	3295-03	RIVET	
27	23292	LOCATION LABEL	

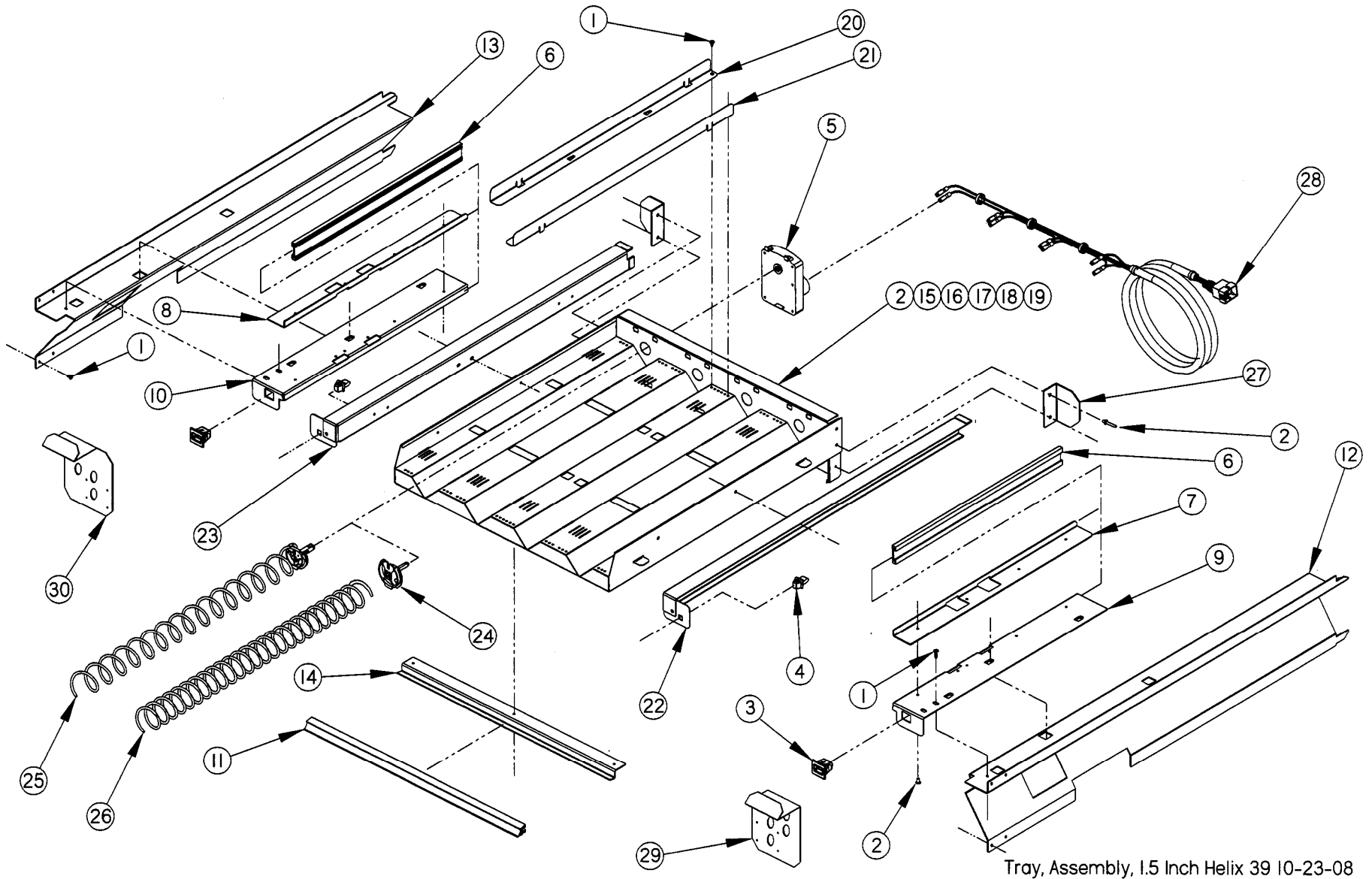
MODEL 39 (SNACK/CANDY/FOOD) TRAY ILLUSTRATION



MODEL 39 (SNACK/CANDY/FOOD) TRAY PARTS LIST

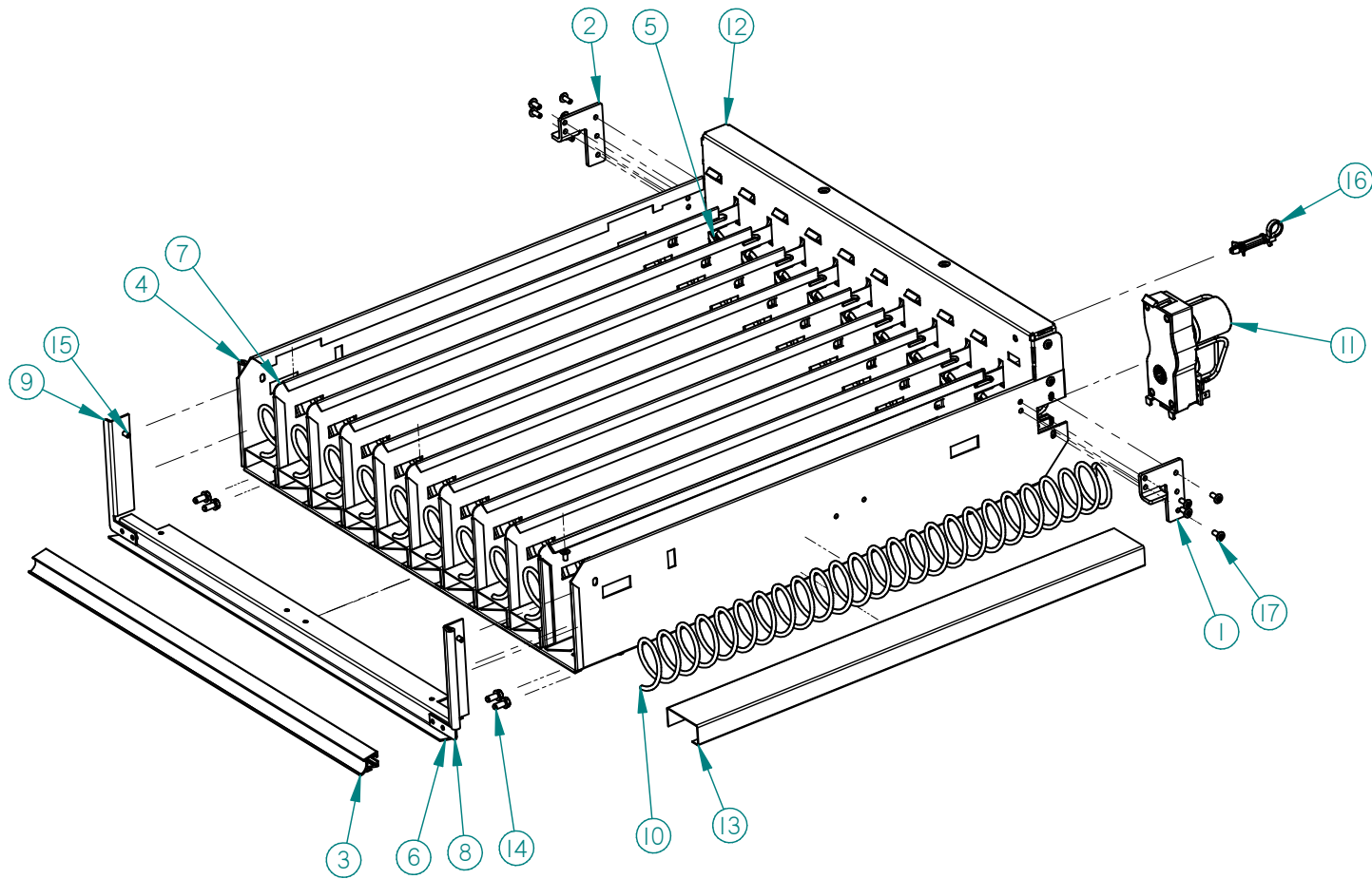
ITEM NO	PART NO.	PART DESCRIPTION	NOTE
1		HELIX	1 PER COLUMN - SEE HELIX SECTION.
2	3000	SCREW, SHEET METAL, 8-18	SAFETY SCREWS FOR RAILS
3	3001-03	SCREW, SHEET METAL, TYPE B, #8-18 (3/8" LONG)	
4	3009-02	RIVET, POP, STEEL, 1/8 (1/8" GRIP)	
5	3019	CANOE CLIP	PLUS 2 PER HELIX ALIGNMENT DEVICE
6	3020	WIRE TIE, STANDOFF	
7	3021	DIVIDER CAP	PART NO LONGER USED
8	3042-01	WIRE TIE, PANEL MOUNT	
9	3111	HELIX EJECTOR	
10	3295-03	RIVET, STEEL, 1/8", PLATED	
11	20073	TRAY STOP (RH)	
12	20073-01	TRAY STOP (LH)	
13	23007	MOTOR, WITH HOME CIRCUIT, S3	OPTIONAL
	23007-01	MOTOR W/HOME CIRCUIT, CW	OPTIONAL
14	20133	TRAY DIVIDER SPRING	PER DIVIDER
15	20147	HARNESS, TRAY, 10 COLUMN	
16	20220	EXTRUSION, CANDY PUSHER	PER DIVIDER WITH CUT-OUTS
17	20221	BAR, CANDY PUSHER	PER DIVIDER WITH CUT-OUTS
18	20465-02	EXTRUSION, PRICE MARKER, REDUCED HEIGHT	
19	20544	TRAY DOUBLER, VER 2 (39")	
20	20545	TRAY CORNER, VER. 2 (RH)	
21	20545-01	TRAY CORNER, VER. 2 (LH)	
22	20613	LABEL SHEET, REDUCED HEIGHT LOCATION	
23	20614	LABEL SHEET, REDUCED HEIGHT PRICE	
24	20796-01	EDGE TRIM, TRAY CORNER	RIGHT HAND CORNER ONLY
25	20955	TRAY BODY, REDUCED DEPTH (39")	
26	20966	HELIX ADAPTER, WITHOUT HUB	
27	22192	HELIX ALIGNMENT DEVICE, PVC	
28	22250	ASSEMBLY, RAIL, SNACK, RIGHT	
29	22251	ASSEMBLY, RAIL, SNACK, LEFT	
30	23333	TRAY DIVIDER, VER 2, 3-3/8" HIGH	SELECT TYPE, NUMBERS TO FORM COLUMNS
	23334	TRAY DIVIDER, VER 2, 4-7/8"	SELECT TYPE, NUMBERS TO FORM COLUMNS

1.5" HELIX TRAY ASSEMBLY PARTS LIST



1.5" HELIX TRAY ASSEMBLY PARTS LIST				
ITEM NO	PART NO.	PART NAME	QTY	NOTES
1	3000	SCREW, TEK 8-18	18	
2	3009-02	RIVET, POP, STEEL, 1/8	34	
3	3246	LATCH, NYLON, GUM AND MINT	2	
4	3247	STRIKE, NYLON, GUM AND MINT	2	
5	20086	MOTOR, SINGLE HELIX W/O SWITCH	4	
6	20236	EXTRUSION, GUM AND MINT RAIL	2	
7	20237	EXTRUSION MOUNT, UPPER (GUM AND MINT)(RIGHT SIDE)	1	
8	20237-01	EXTRUSION MOUNT, UPPER (GUM AND MINT)(LEFT SIDE)	1	
9	20238	EXTRUSION MOUNT, LOWER (GUM AND MINT)(RIGHT SIDE)	1	
10	20238-01	EXTRUSION MOUNT, LOWER (GUM AND MINT)(LEFT SIDE)	1	
11	20465-04	EXTRUSION, PRICE MARKER, REDUCED HEIGHT	1	
12	20973	RAIL, GUM AND MINT, REDUCED DEPTH (39")(RIGHT SIDE)	1	RAILS TO FIT TRAY TO 39" CABINET
13	20973-01	RAIL, GUM AND MINT, REDUCED DEPTH (39")(LEFT SIDE)	1	
14	21196	DOUBLER, TRAY 1.5" HELIX TRAY	1	
15	21197	TRAY BODY, 1.5" HELIX TRAY	1	PARTS ARE FACTORY ASSEMBLED AS A UNIT
16	21199	TRAY BACK, 1.5" HELIX TRAY	1	
17	21200	TRAY INNER SIDE, 1.5" HELIX TRAY	2	
18	21201	TRAY INNER SECTION, 1.5" HELIX TRAY	2	
19	21202	TRAY INNER MID SECTION, 1.5" HELIX TRAY	1	
20	21203	DIVIDER, TRAY, 1.5" HELIX TRAY, RH	4	
21	21203-01	DIVIDER, TRAY, 1.5" HELIX TRAY, LH	4	
22	21204	TRAY SLIDE CHANNEL,1.5" HELIX TRAY, RH	1	
23	21204-01	TRAY SLIDE CHANNEL,1.5" HELIX TRAY, LH	1	
24	21206	HELIX ADAPTER, 1.5" HELIX TRAY	4	
25	21207-15	HELIX, 1.5" TRAY, COUNTERCLOCKWISE, BLACK	2	TRAY IS EQUIPPED WITH TWO OF EACH SEE HELIX SECTION
26	21207-25	HELIX, 1.5" TRAY, COUNTERCLOCKWISE, BLACK	2	
27	21523	BRACKET, STOP, 1.5" HELIX TRAY	2	
28	21584	HARNESS, 1.5" HELIX TRAY	1	
29	22387	DEFLECTOR PLATE, 1.5" HELIX TRAY	1	NOT REQUIRED
30	22387-01	DEFLECTOR PLATE, 1.5" HELIX TRAY	1	NOT REQUIRED

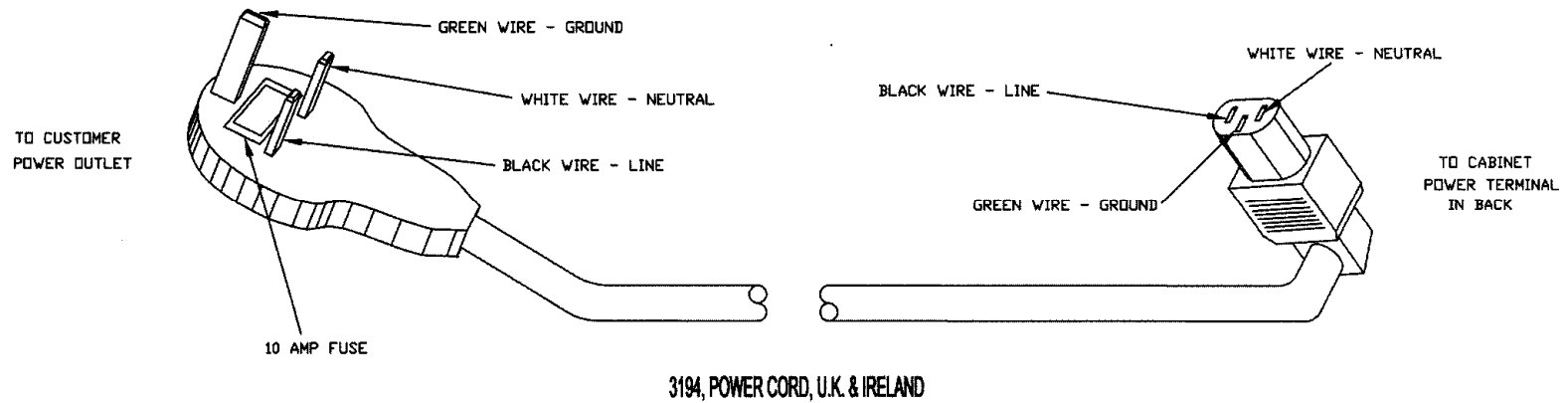
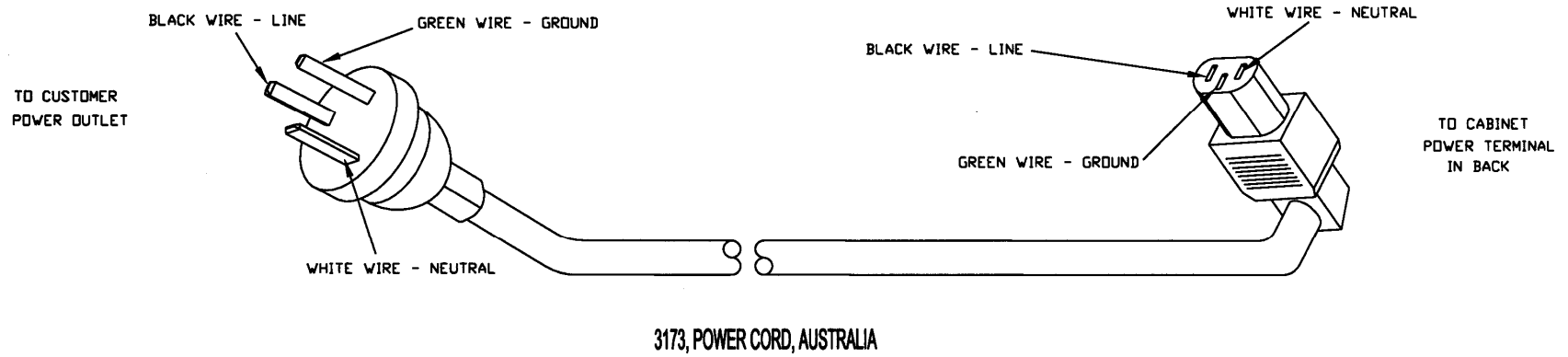
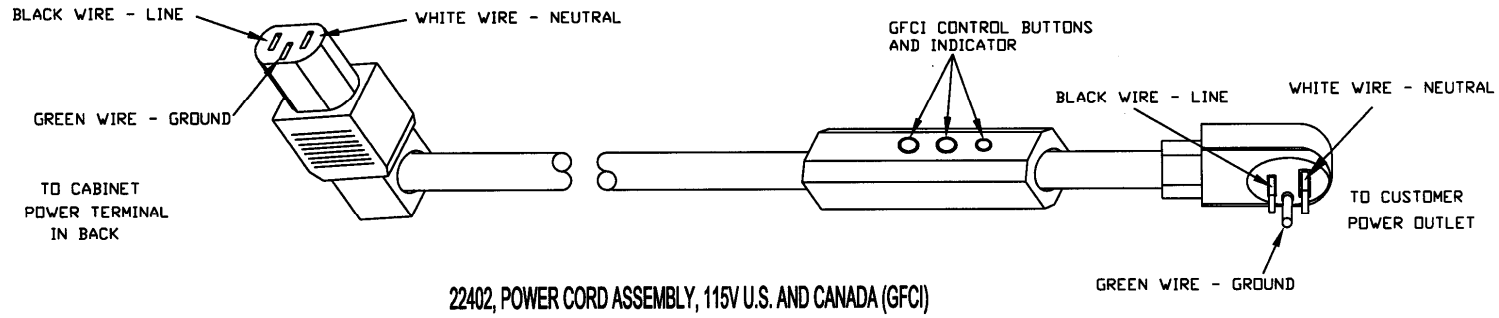
MODEL 28, 10 SELECTION TRAY

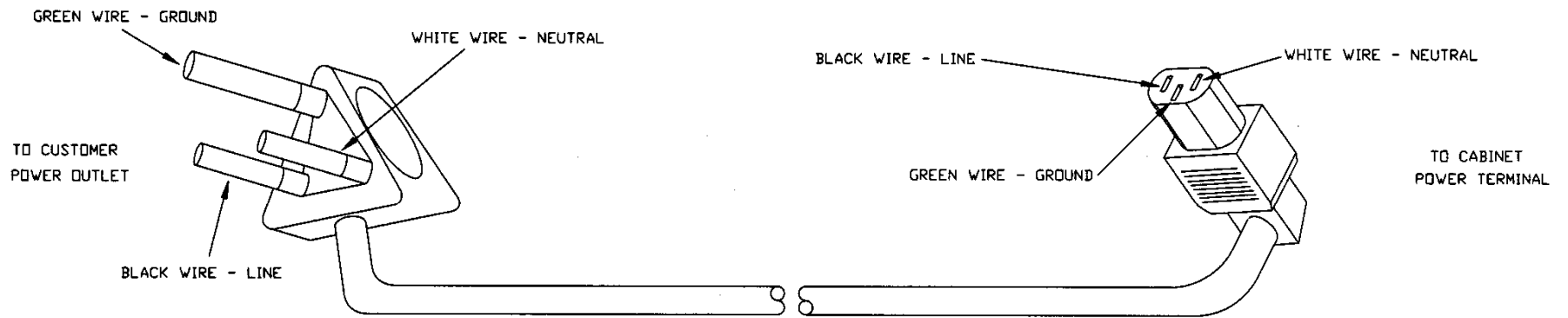


MODEL 28, 10 SELECT TRAY PARTS LIST

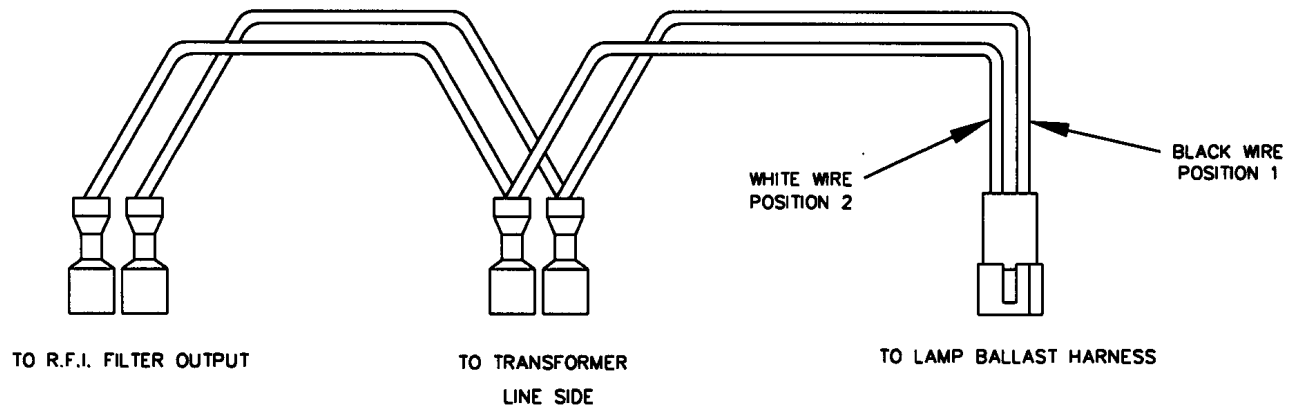
ITEM	PART NO.	PART DESCRIPTION	NOTE
1	20073	TRAY STOP	
2	20073-01	TRAY STOP, LH	
3	20465-06	EXTRUSION, PRICE MARKER, (16.2')	
4	20796-01	EDGE TRIM, TRAY CORNER	
5	21206	HELIX ADAPTER, 1.5" HELIX TRAY	
6	23492	TRAY DOUBLER, SLIM	
7	23966	TRAY DIVIDER ASSEMBLY	
8	24050	TRAY CORNER	
9	24050-01	TRAY CORNER (LH)	
10	24061-XX	HELIX, 1.5"	SEE HELIX SELECTION
11	24080	MOTOR, W/ HOME CIRCUIT, REVERSIBLE	
12	24197	TRAY BODY 10 SELECT	
13	24198	HELIX REST	
14	3001-03	SCREW	
15	3009-02	RIVET	
16	3042-01	WIRE TIE	
17	3295-03	RIVET	
18	20147	10 COLUMN TRAY HARNESS	ITEM NOT SHOWN

ELECTRICAL HARNESS ILLUSTRATIONS

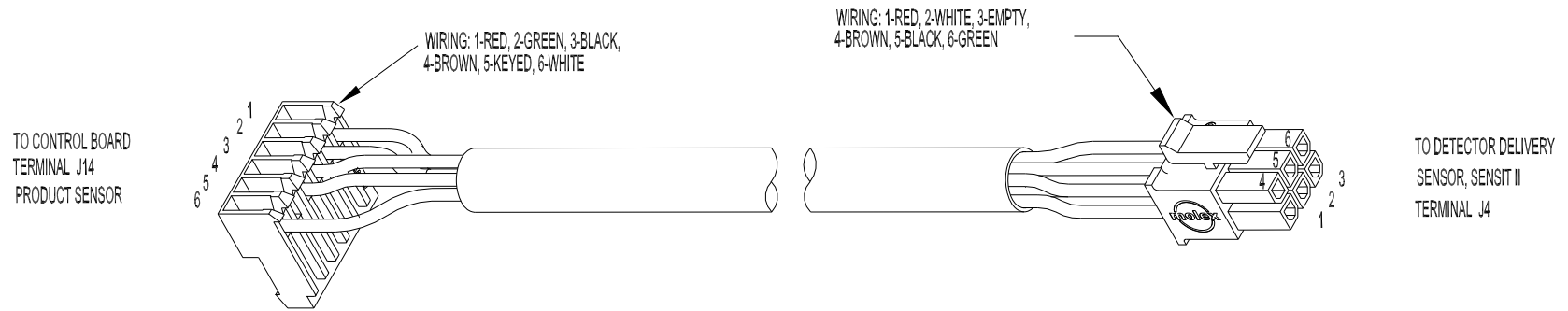




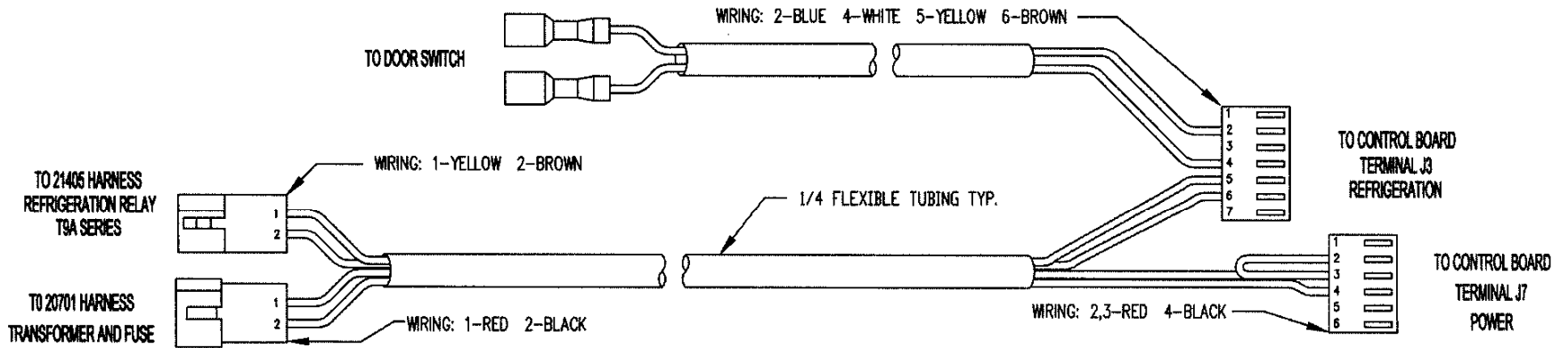
3208 POWER CORD, INDIA AND SOUTH AFRICA



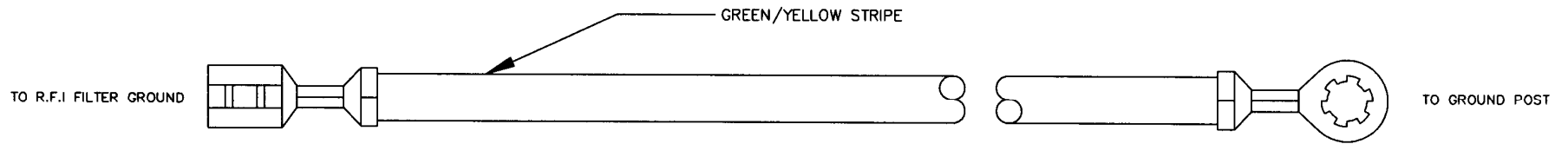
20149, HARNESS, BALLAST/TRANSFORMER LINE



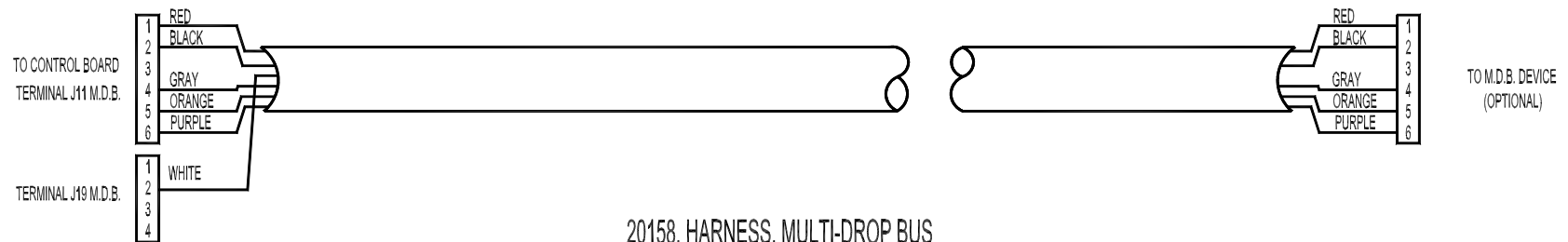
23503 HARNESS, DELIVERY SENSOR DETECTOR/CONTROL, SENSIT II



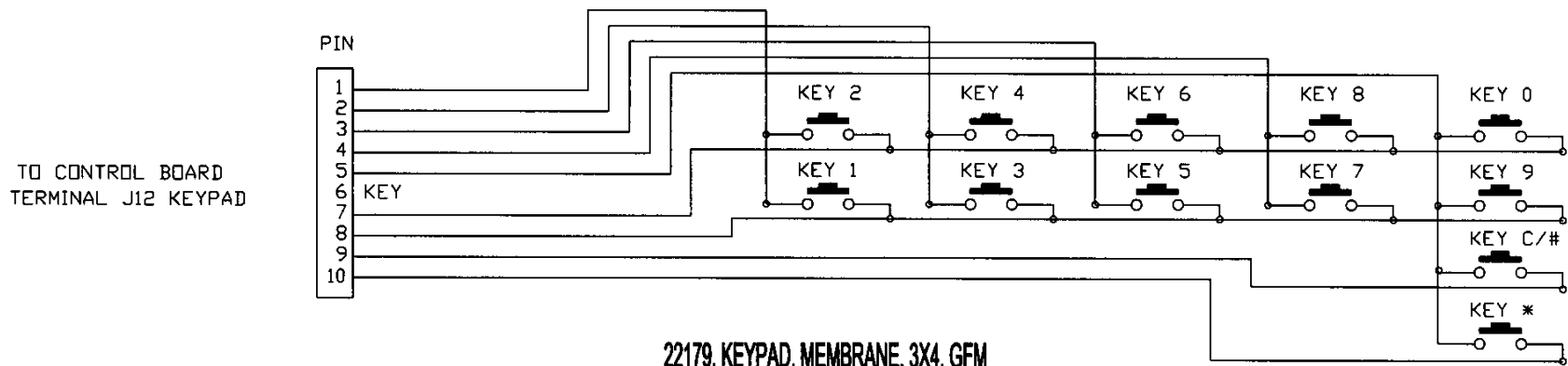
21590, HARNESS, CONTROL POWER AND REFRIGERATION RELAY, SENSIT II



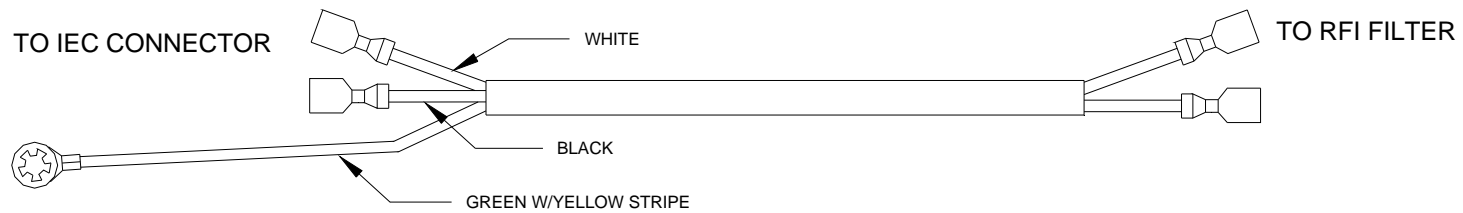
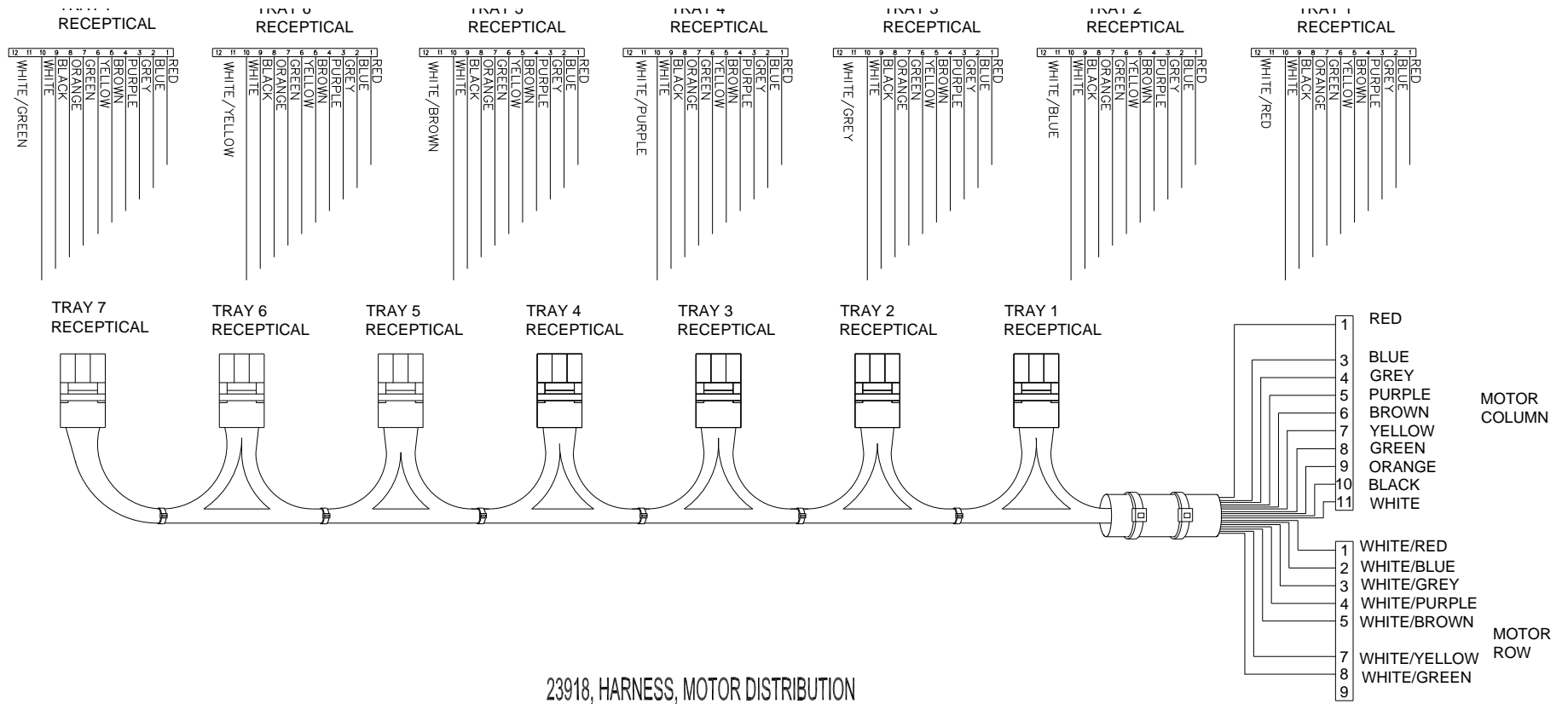
20154, HARNESS, R.F.I. FILTER GROUND

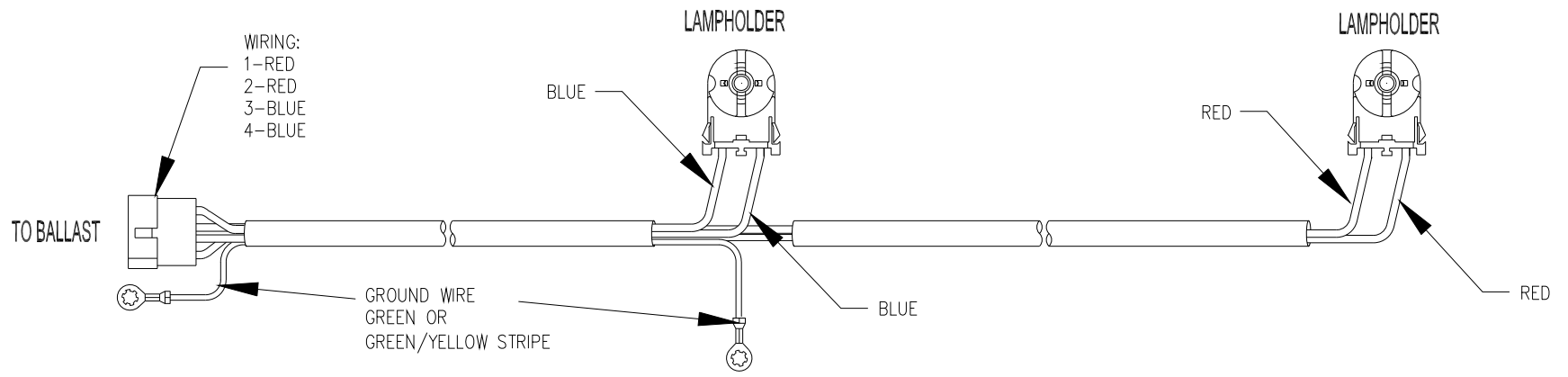


20158, HARNESS, MULTI-DROP BUS

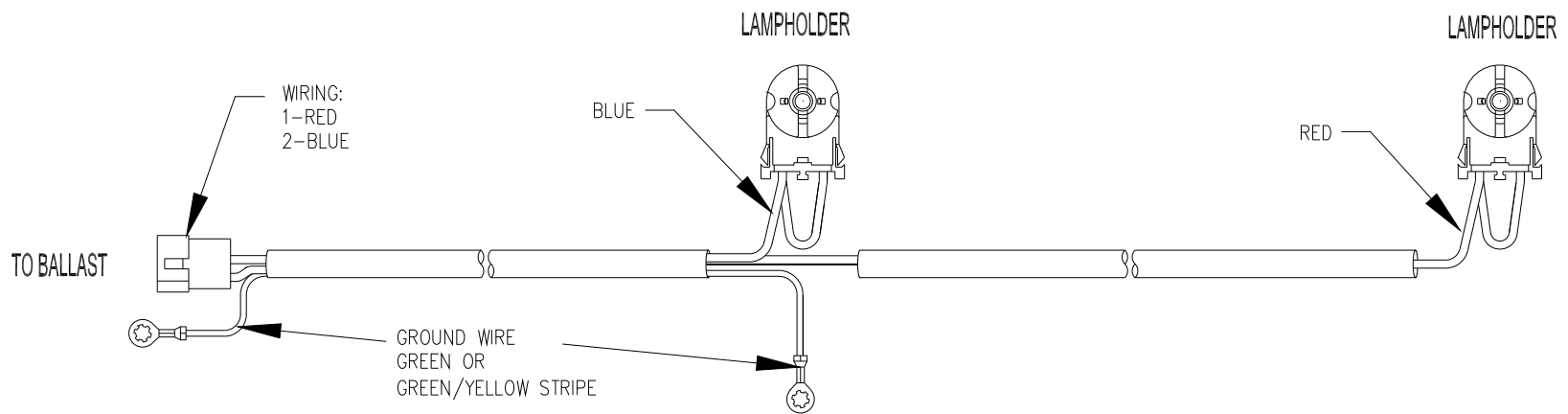


22179, KEYPAD, MEMBRANE, 3X4, GFM
(HARNESS IS INTEGRAL WITH SWITCH)

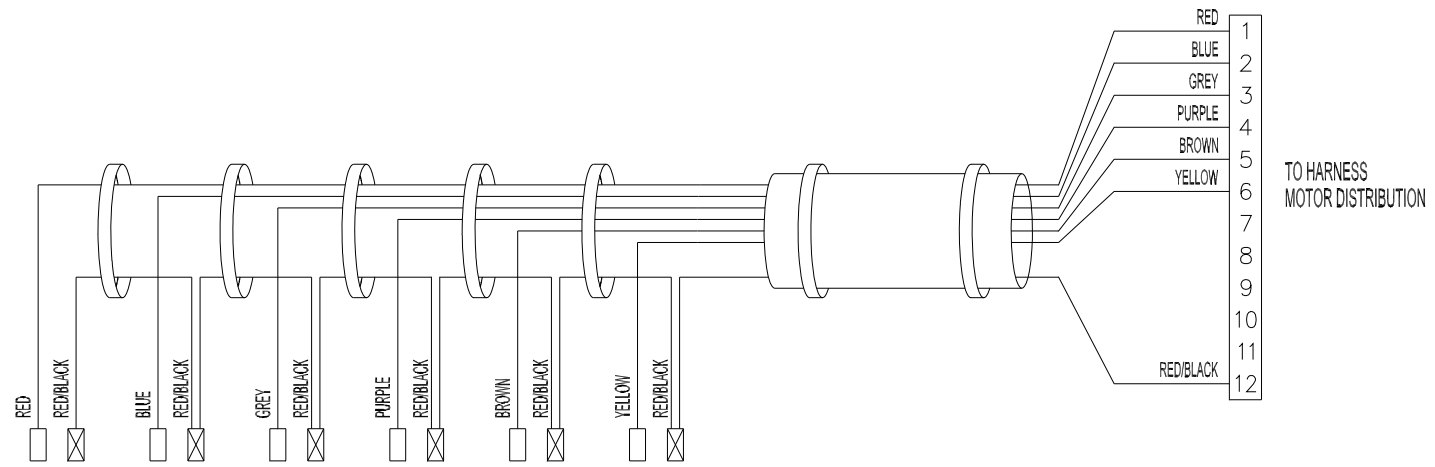




24023, HARNESS, SINGLE LAMP 220V

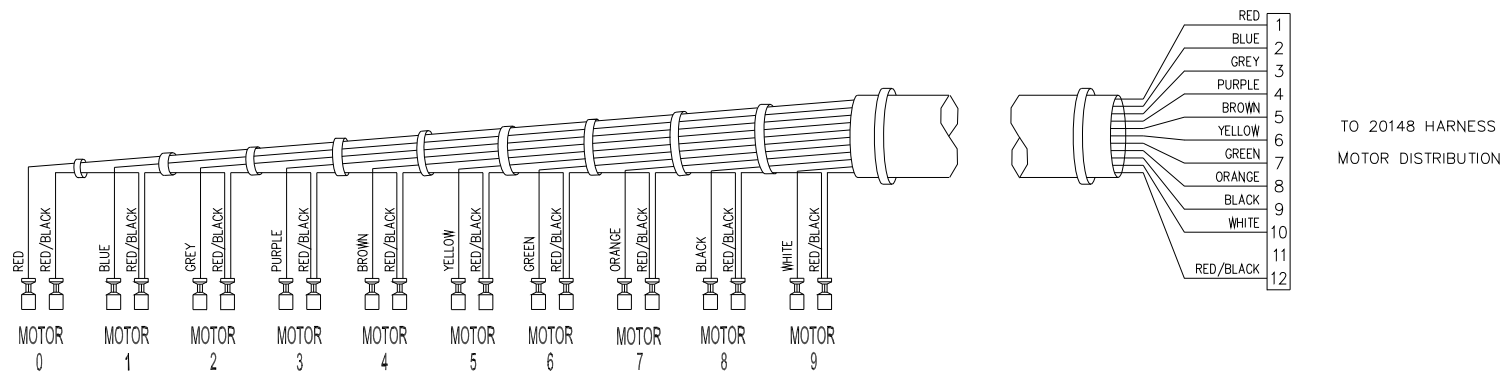


23901, HARNESS, SINGLE LAMP 110V



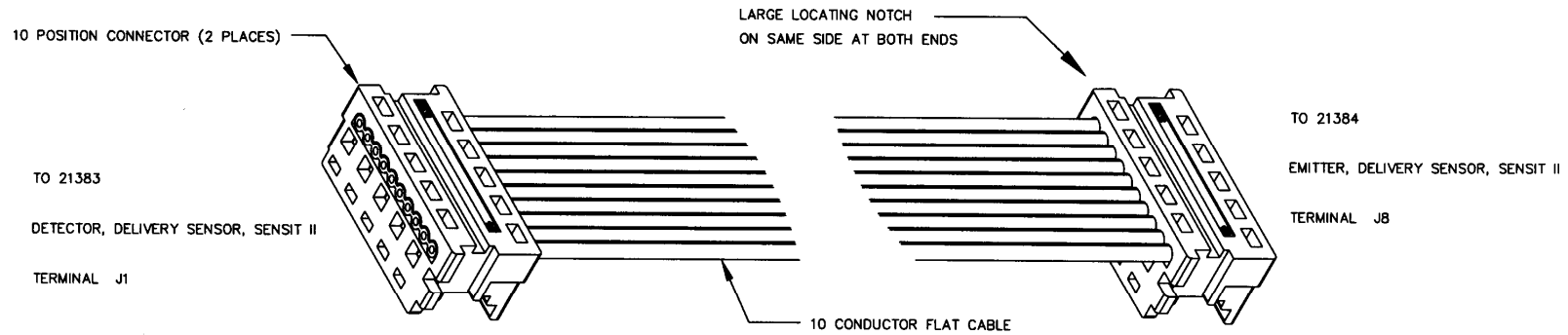
23501, HARNESS, TRAY, 6 COLUMN

TO 215
AND RE
LEFT

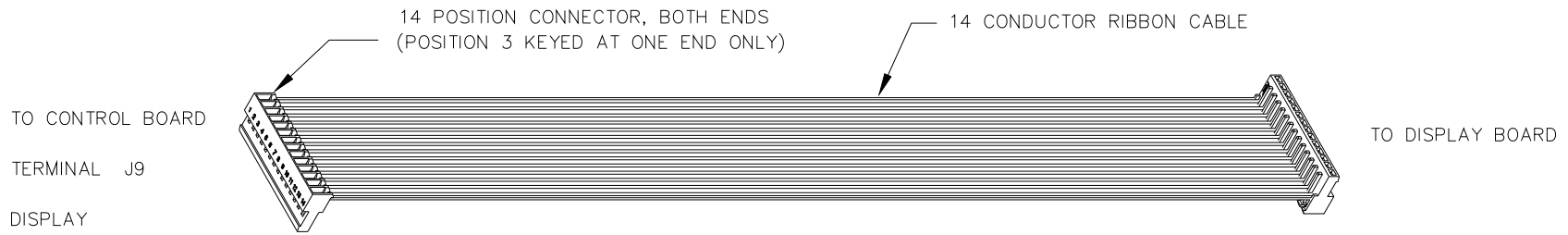


20147, HARNESS, TRAY, 10 COLUMN

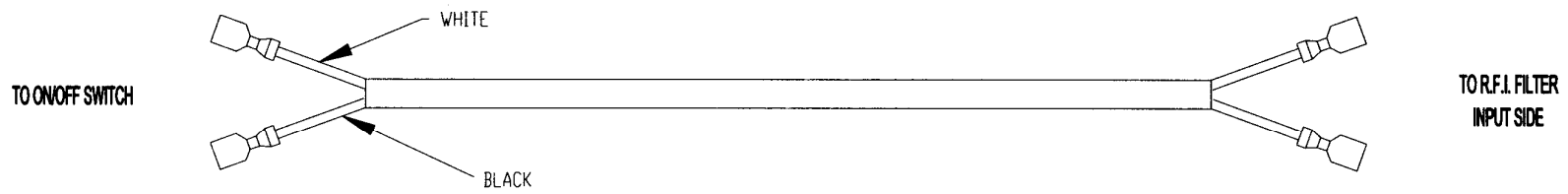
SFORMER
SECONDARY



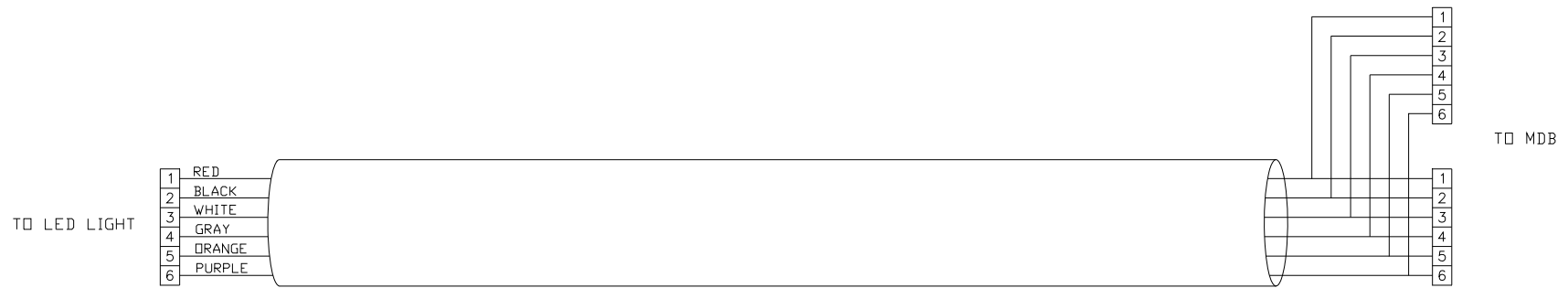
21426 HARNESS, DELIVERY SENSOR DETECTOR/EMITTER, SENSIT II



24015 HARNESS, DISPLAY



21485, HARNESS, ON/OFF SWITCH

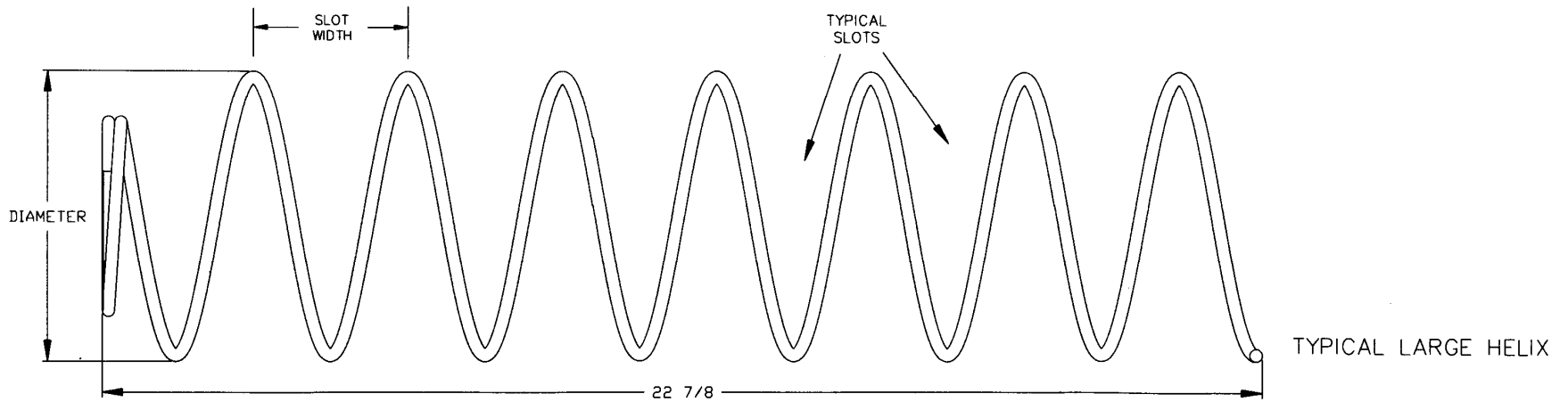
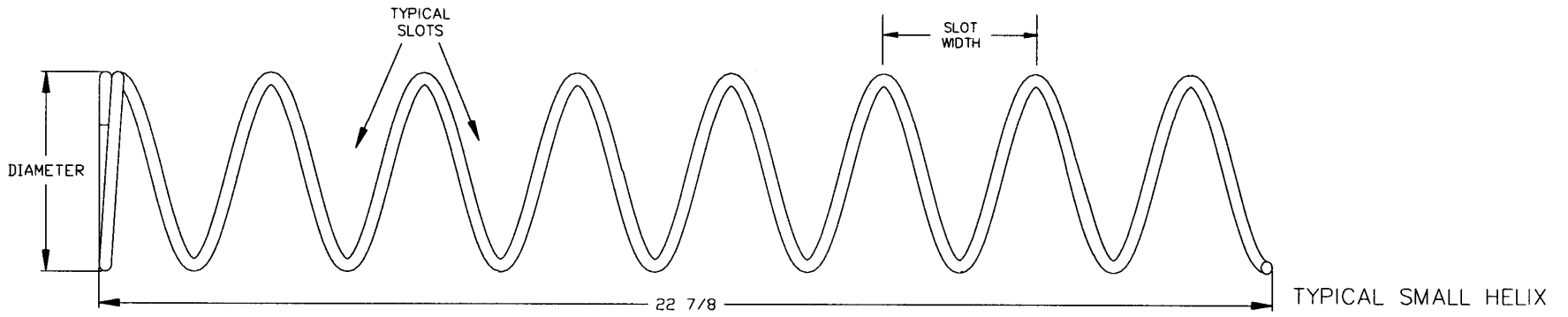
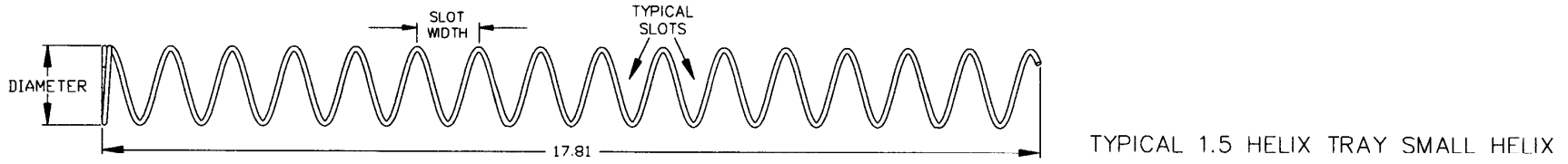


24271, HARNESS, LED/MDB EXTENSION

PART NO.	PART DESCRIPTION	NOTES
22402	POWER CORD ASSEMBLY, 115V U.S. AND CANADA	
3173	POWER CORD, AUSTRALIA	
3194	POWER CORD, U.K. AND IRELAND	
3208	POWER CORD, INDIA AND SOUTH AFRICA	
20149	HARNESS, BALLAST/ TRANSFORMER	
23503	HARNESS, DELIVERY SENSOR DETECTOR/CONTROL	
21590	HARNESS, CONTROL POWER AND REFRIGERATION RELAY	
20154	HARNESS, R.F.I. FILTER GROUND	
20158	HARNESS, MULTI-DROP BUS	
22179	KEYPAD, MEMBRANE, 3X4, GFM	
23918	HARNESS, MOTOR DISTRIBUTION	
23901	HARNESS, SINGLE LAMP 110V	110V UNITS
24023	HARNESS, SINGLE LAMP 220V	220V UNITS
23501	HARNESS, TRAY, 6 COLUMN	28" GEM
23357	HARNESS, POWER INPUT	
20701	HARNESS, TRANSFORMER AND FUSE	
20730	HARNESS, BALLAST, 110V	110V UNITS
24025	HARNESS, BALLAST, 220V	220V UNITS
21426	HARNESS, DELIVERY SENSOR DETECTOR,	
21432	HARNESS, DISPLAY, SENSIT II	
21485	HARNESS, ON/OFF SWITCH	
24271	HARNESS, LED/MDB EXTENSION	USE WITH LED OPTION, 39" GEM ONLY
20147	HARNESS, TRAY, 10 COLUMN	39" GEM

THIS PAGE INTENTIONALLY LEFT BLANK

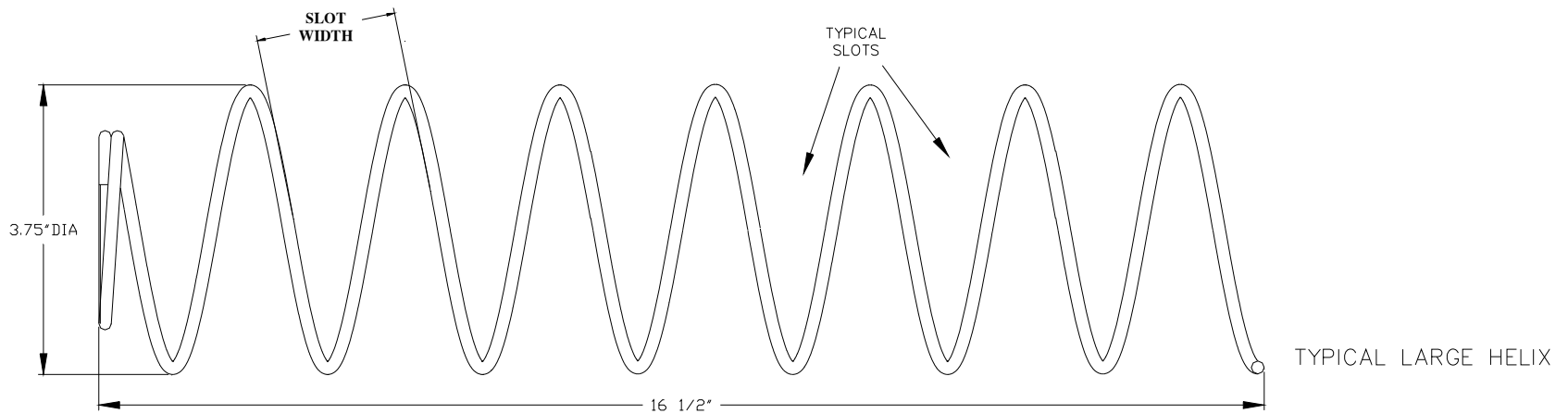
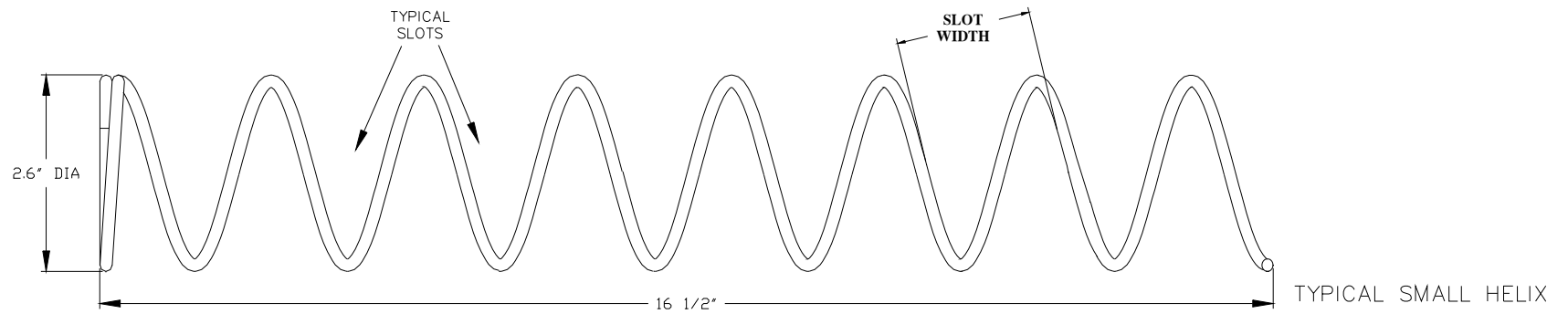
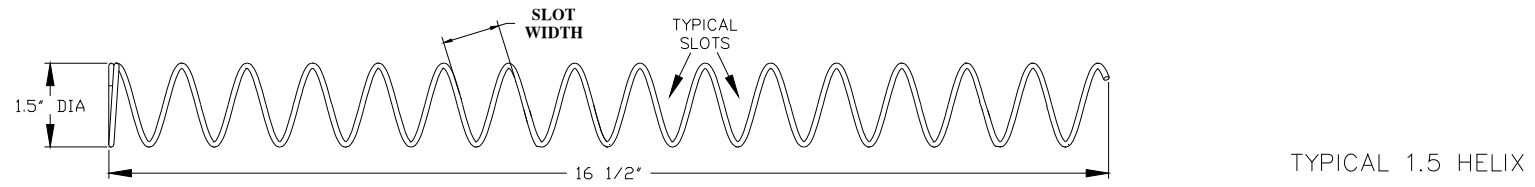
MODEL 39 HELIX ILLUSTRATIONS



MODEL 39 HELIX PARTS LIST

PART NO.	HELIX DESCRIPTION *	SLOT (VEND) WIDTH	NUMBER OF SLOTS (PITCH)	HELIX OUTSIDE DIAMETER	TURNS	QTY PER COLUMN	NOTE
20119-07	Helix, Small CW, Black	2 5/8	7	2.6	CW	1 Set	Use With 20120-07 As A Set
20120-07	Helix, Small CCW, Black	2 5/8	7	2.6	CCW	1 Set	
20119-10	Helix, Small CW, Black	1 7/8	10	2.6	CW	1 Set	Use With 20120-10 As A Set
20120-10	Helix, Small CCW, Black	1 7/8	10	2.6	CCW	1 Set	
20120-12	Helix, Small CCW, Black	1 7/8	12	2.6	CCW	1	
20120-15	Helix, Small CCW, Black	1 7/8	15	2.6	CCW	1	
20120-18	Helix, Small CCW, Black	1 7/8	18	2.6	CCW	1	
20120-24	Helix, Small CCW, Black	1 7/8	24	2.6	CCW	1	
21207-15	Helix, 1.5", CCW, Black	1	15	1.5	CCW	1	Use in 1.5" Helix Tray
21207-25	Helix, 1.5", CCW, Black	9/16	25	1.5	CCW	1	Use in 1.5" Helix Tray
21336	Helix, 3", CCW, Black	3.5	6	3	CCW	1	Bottle Tray
21337	Helix, 3", CCW, Black	3.2	6	3	CCW	1	Bottle Tray
21465-5	Helix, 3.75" CCW, Black	3 1/4	5	3.75	CCW	1	Large Diameter
21465-7	Helix, 3.75" CCW, Black	2 5/8	7	3.75	CCW	1	Large Diameter
21465-9	Helix, 3.75" CCW, Black	2	9	3.75	CCW	1	Large Diameter
21465-10	Helix, 3.75" CCW, Black	1 3/4	10	3.75	CCW	1	Large Diameter
21465-12	Helix, 3.75" CCW, Black	1 1/2	12	3.75	CCW	1	Large Diameter
21465-15	Helix, 3.75" CCW, Black	1 1/4	15	3.75	CCW	1	Large Diameter
23268-10	Helix, 1.5", CCW, Black	2	10	1.5	CCW	1	Use with Mini-Dispenser Kit
23268-20	Helix, 1.5", CCW, Black	1 1/8	20	1.5	CCW	1	Use with Mini-Dispenser Kit
23268-32	Helix, 1.5", CCW, Black	5/8	32	1.5	CCW	1	Use with Mini-Dispenser Kit

MODEL 28 HELIX ILLUSTRATIONS



MODEL 28 HELIX PARTS LIST

PART NO.	HELIX DESCRIPTION *	SLOT (VEND) WIDTH	NUMBER OF SLOTS (PITCH)	HELIX OUTSIDE DIAMETER	TURNS	QTY PER COLUMN	NOTE
24061-07	Helix, 1.5", CCW, Black	2	7	1.5	CCW	1	Use With Mini-Dispenser Kit 24026-01
24061-14	Helix, 1.5", CCW, Black	1 1/8	14	1.5	CCW	1	Use With Mini-Dispenser Kit 24026-01
24061-23	Helix, 1.5", CCW, Black	5/8	23	1.5	CCW	1	Use With Mini-Dispenser Kit 24026-01
24031-03	Helix, 2.6", CW, Black	3 5/8	3	2.6	CW	1 Set	Use With 23549-03 To Couple Motors
24031-04	Helix, 2.6", CW, Black	2 3/4	4	2.6	CW	1 Set	Use With 23549-04 To Couple Motors
24031-07	Helix, 2.6", CW, Black	2	7	2.6	CW	1 Set	Use With 23549-07 To Couple Motors
24031-08	Helix, 2.6", CW, Black	1 3/4	8	2.6	CW	1 Set	Use With 23549-08 To Couple Motors
24031-10	Helix, 2.6", CW, Black	1 3/8	10	2.6	CW	1	
23549-03	Helix, 2.6", CCW, Black	3 5/8	3	2.6	CCW	1	
23549-04	Helix, 2.6", CCW, Black	3 1/8	4	2.6	CCW	1	
23549-05	Helix, 2.6", CCW, Black	2 3/4	5	2.6	CCW	1	
23549-06	Helix, 2.6", CCW, Black	2 1/4	6	2.6	CCW	1	
23549-07	Helix, 2.6", CCW, Black	2	7	2.6	CCW	1	
23549-08	Helix, 2.6", CCW, Black	1 3/4	8	2.6	CCW	1	
23549-11	Helix, 2.6", CCW, Black	1 .5	11	2.6	CCW	1	
23549-13	Helix, 2.6", CCW, Black	1 3/16	13	2.6	CCW	1	
23549-17	Helix, 2.6", CCW, Black	1	17	2.6	CCW	1	
23976-03	Helix, 3.75", CCW, Black	4 1/4	3	3.75	CCW	1	
23976-04	Helix, 3.75", CCW, Black	3 5/8	4	3.75	CCW	1	
23976-05	Helix, 3.75", CCW, Black	2 3/4	5	3.75	CCW	1	
23976-06	Helix, 3.75", CCW, Black	2 1/4	6	3.75	CCW	1	
23976-07	Helix, 3.75", CCW, Black	2	7	3.75	CCW	1	
23976-09	Helix, 3.75", CCW, Black	1 3/4	9	3.75	CCW	1	
23976-11	Helix, 3.75", CCW, Black	1 3/8	11	3.75	CCW	1	
23976-17	Helix, 3.75", CCW, Black	1	17	3.75	CCW	1	